

Solucion a graficadores circulares NO MAS CONSUMIBLES!



DATALOGGER

Bluetooth registrador de temperatura e impresión de reporte

Main features:

1. Real-time display of data
2. High accuracy and stability
3. Bluetooth 4.0
4. Long distance wireless transfer
5. Built-in highly sensitive temperature and humidity sensor
6. It can store 12,000 pieces of temperature and humidity data
7. Can be set normal storage temperature and humidity data interval and alarm storage temperature and humidity data interval
8. One button operation, easy to use



Monitoreo Equipo Biomedical

Refrigeracion Comercial



Medicine&Pharmacy



Commercial refrigerators



Cold storage



Food Production



Perishable&Fresh



Environmental monitoring

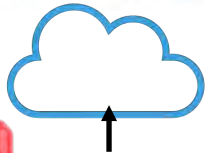


APP para Androi & IOS

Project	Features
Product name	Outdoor bluetooth / ble temperature sensor beacon
Protocol standard	Bluetooth 4.0
Modulation mode	GFSK
Send interval	2S,adjustable
Built in battery	550mAh /3V
Output power	-4dBm,adjustable
Communication rate	1Mbps
Receiving sensitivity	1Mbps@-93dbm
Maximum transmission distance	50 meters,adjustable
Battery life	300 days (Depends on the mode of operation. Re-placeable)
Net weight	30g
Outline size	50mm*50mm*20mm
Temperature operating range	-25~60
Humidity detection range	0~100%RH
Temperature detection accuracy	±0.3
Humidity detection accuracy	±3%RH

GATEWAY TCP/IP

IoT Gateway Model: CTW-L0000



Serial connection



Main features:

System Features

- Adopted highly integrated industrial 32-bit ARM MCU
- Reliable performance with built-in double watchdog, 24x7 operation
- With signal filtering mechanisms
- Network-reconnect and retransmission to ensure data accurately transmit
- Update RTC automatically or manually, clock source support Sms, NTP, CwtIO Server
- Can set multiple timers(second, minute, day, week, month) to upload data
- Provide configure software, visual programming
- Optional inside battery that life is 8-20 hours, cellular module Intelligent sleep when power lost
- Optional OLED displaye



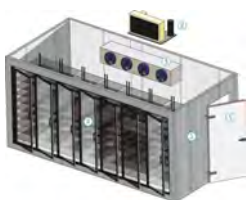
Application



Trucks



Biomedical



Chamber

Specifications

Core	MCU	Cortex M3 32-bit ARM
Power	Power supply	9-28V DC (Standard adapter: DC 12V/1.5A)
	Consumption	12V input Max. 150mA/Average 50mA
Network	Optional Network	GSM/GPRS (4 band 850/900/1800/1900Mhz) FDD LTE(4G) Wi-Fi, 802.11 b/g security WEP/WPA/WPA2
Config port	Mini USB	PL2303 chip
Other interface	SIM/UIIM	Standard user card interface
	Antenna	Standard SMA female interface (50Ω)
Others	Optional Battery	lithium-polymer, 500mAh/3.7V, life:8-20 hours
Working Environment	temperature	-30℃ ~ +70℃
	humidity	5 ~ 95%(non-condensing)
Physical	Terminals	1x8pin 3.81mm spacing, pluggable
	Housing	Providing IP30 protection
	Dimension	88x60x25mm
	Weight	150G

GATEWAY TCP/IP

IoT Gateway—Energy Consumption



Serial connection



Main features:

System Features

- Adopted highly integrated industrial 32-bit ARM MCU
- Reliable performance with built-in double watchdog, 24×7 operation
- With signal filtering mechanisms
- Network-reconnect and retransmission to ensure data accurately transmit
- Update RTC automatically or manually, clock source support Sms, NTP, CwtIO Server
- Can set multiple timers(second, minute, day, week, month) to upload data
- Provide configure software, visual programming
- Optional inside battery that life is 8-20 hours, cellular module Intelligent sleep when power lost
- Optional OLED display

Application



Electrical center



Machinery



Process

Specifications

Core	MCU	Cortex M3 32-bit ARM
Power	Power supply	9-28V DC (Standard adapter: DC 12V/1.5A)
	Consumption	12V input Max. 150mA/Average 50mA
Network	Optional Network	GSM/GPRS (4 band 850/900/1800/1900Mhz) FDD LTE(4G) Wi-Fi, 802.11 b/g security WEP/WPA/WPA2
Config port	Mini USB	PL2303 chip
Other interface	SIM/UIIM	Standard user card interface
	Antenna	Standard SMA female interface (50Ω)
Others	Optional Battery	lithium-polymer, 500mAh/3.7V, life:8-20 hours
Working Environment	temperature	-30℃ ~ +70℃
	humidity	5 ~ 95%(non-condensing)
Physical	Terminals	1×8pin 3.81mm spacing, pluggable
	Housing	Providing IP30 protection
	Dimension	88×60×25mm
	Weight	150G



GATEWAY TCP/IP

IoT Gateway—Energy Consumption



Main features: System Features



- Adopted highly integrated industrial 32-bit ARM MCU
- Reliable performance with built-in double watchdog, 24×7 operation
- With signal filtering mechanisms
- Network-reconnect and retransmission to ensure data accurately transmit
- Update RTC automatically or manually, clock source support Sms, NTP, CwtIO Server
- Can set multiple timers(second, minute, day, week, month) to upload data
- Provide configure software, visual programming
- Optional inside battery that life is 8-20 hours, cellular module Intelligent sleep when power lost
- Optional OLED display

1	2	46	47	49	48	30	35	36	59	58
N	L	AP+	AP-	RP+	RP-	COM	IN1	IN2	B	A
Power		Active Pulse		Reactive Pulse		On-Off Input		RS485		

3 Phase 4 Wires

VOLTAGE DIRECTLY

CONNECT VOLTAGE FROM TRANSFORMER

3 Phase 3 Wires

VOLTAGE DIRECTLY

CONNECT VOLTAGE FROM TRANSFORMER

Note: Current with "*" symbol is input end.

Voltage				Current Signal					
UN	UC	UB	UA	IC	IC*	IB	IB*	IA	IA*
14	13	12	11	9	8	7	6	5	4

Technical Index Accuracy of measurement

- *Voltage: level 0.5
- *Current: level 0.5
- *Active power: level 0.5
- *Reactive power: level 0.5
- *Power factor: level 0.5
- *Frequency: ±0.02Hz
- *Active electric energy: class 0.5s
- *Reactive electric energy: class 1 or class 2

Signal Input

- *Connection Mode: three phase four wires, three phase three wires
- *Rated Voltage: AC 57.7V, AC 100V, AC 220V, AC 380V
- *Rated Current: AC 1A, AC 5A
- *Overload:
 - Voltage: 1.2 times(continued), 2 times/1second(instantaneous)
 - Current: 1.2 times(continued), 10 times/5second(instantaneous)
- *Power Consumption
 - Voltage: <1VA per phase
 - Current: <0.4VA per phase
- *Impedance
 - Voltage: >300KΩ
 - Current: <20mΩ
- *Frequency: 45~60Hz

Accessory Power Supply

- *Working Range: AC/DC 80-270V
- *Power Consumption: <4VA
- Function Module
 - *Communication Interface: 1 way RS-485 communication, modbus-RTU protocol
 - *Baud Rate: 2400~9600bps, the default is 9600bps
 - *Switch Input: 4 ways
 - *Switch Output: 3 ways(capacity: AC 250V/1A, DC 30V/5A)
 - *Transmission Output: 3 ways(analog Output: 0/4~20mA or 0~5/10V)
 - *Electric energy pulse output: 2 ways(constant: 3200imp/kwh(kvarh))



GATEWAY POWER METER TCP/IP

IoT Gateway—Energy Consumption

Main features: System Features

- Adopted highly integrated industrial 32-bit ARM MCU
- Reliable performance with built-in double watchdog, 24×7 operation
- With signal filtering mechanisms
- Network-reconnect and retransmission to ensure data accurately transmit
- Update RTC automatically or manually, clock source support Sms, NTP, CwtIO Server
- Can set multiple timers(second, minute, day, week, month) to upload data
- Provide configure software, visual programming
- Optional inside battery that life is 8-20 hours, cellular module Intelligent sleep when power lost
- Optional OLED display



1	2	46	47	49	48	30	35	36	59	58
N	L	AP+	AP-	RP+	RP-	COM	IN1	IN2	B	A
Power		Active Pulse		Reactive Pulse		On-Off Input		RS485		

3 Phase 4 Wires

VOLTAGE DIRECTLY

CONNECT VOLTAGE FROM TRANSFORMER

3 Phase 3 Wires

VOLTAGE DIRECTLY

CONNECT VOLTAGE FROM TRANSFORMER

Note: Current with "*" symbol is input end.

Voltage				Current Signal					
UN	UC	UB	UA	IC	IC*	IB	IB*	IA	IA*
14	13	12	11	9	8	7	6	5	4

Technical Index Accuracy of measurement

- *Voltage: level 0.5
- *Current: level 0.5
- *Active power: level 0.5
- *Reactive power: level 0.5
- *Power factor: level 0.5
- *Frequency: ±0.02Hz
- *Active electric energy: class 0.5s
- *Reactive electric energy: class 1 or class 2

Signal Input

- *Connection Mode: three phase four wires, three phase three wires
- *Rated Voltage: AC 57.7V, AC 100V, AC 220V, AC 380V
- *Rated Current: AC 1A, AC 5A
- *Overload:
 - Voltage: 1.2 times(continued), 2 times/1second(instantaneous)
 - Current: 1.2 times(continued), 10 times/5second(instantaneous)
- *Power Consumption
 - Voltage: <1VA per phase
 - Current: <0.4VA per phase
- *Impedance
 - Voltage: >300KΩ
 - Current: <20mΩ
- *Frequency: 45~60Hz



MONITOR REMOTO DE TEMPERATURA

conexión 4G o WIFI



- Interface**
- 4 temperature & humidity probe inputs
 - 4 outputs, can linkage with temperature alarm (e.g. siren, relay, switch)
 - 4 digital inputs to receive dry contact
 - 4 analog inputs(4-20mA), read sensors (e.g. voltage, current, level sensor)
 - 1 RS232 for configuration

- Data logger**
- Cloud Data logger
 - Customized logger interval
 - Support connect Max 4 cloud or local servers

- Wireless Network**
- Either GPRS(option: 3G/4G, need Simcard) or Wi-Fi(Not need simcard)
 - To communicate with server with CWT IO or Modbus TCP protocol or MQTT
 - Support connect up to 4 servers(IP or domain)



- SMS (available for gsm/3g version)**
- SMS alarm when high and low
 - Editable SMS alarm texts
 - Query current value via SMS command
 - SMS report on schedule
 - Power failure SMS alarm (need add inside battery)
 - Can preset 10 cell phone numbers
 - Can query SIM card balance, SMS forward
 - Remote config via SMS

- Technical Feature**
- Network-reconnect and retransmission to ensure sms and data accurately transmit
 - Inside watch dog to assures 7*24 hours working
 - Optional inside 1000mA battery, life 8-20 hours
 - With immediacy and reliability of the system
 - GPS module optional
 - Free configure software

4 channels Temperature Humidity Input

Temperature Humidity Probe
Measurement Range:
-40℃~80℃(±0.5℃) / 0% -100%RH (±3RH%)

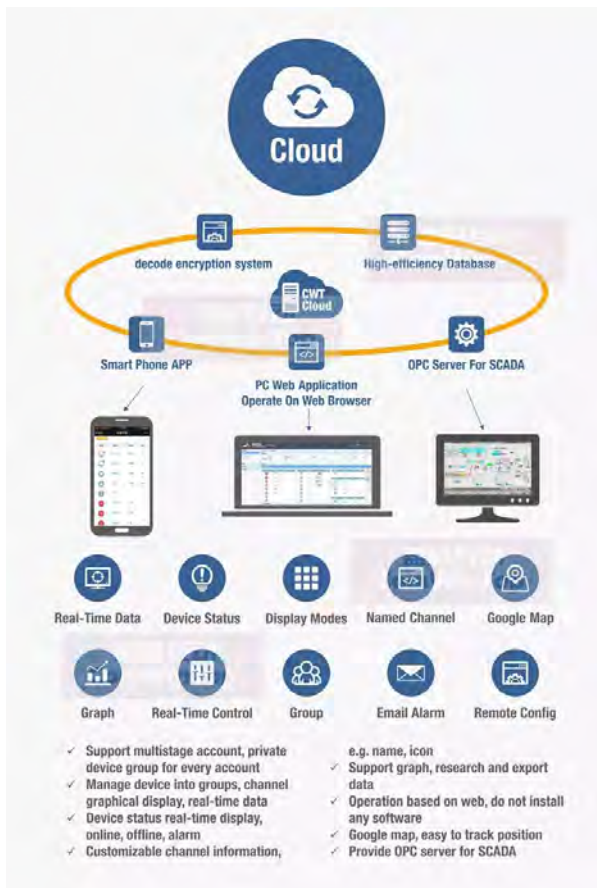
Option: Temperature Probe (waterproof)
Measurement Range: -55℃ ~ 125℃





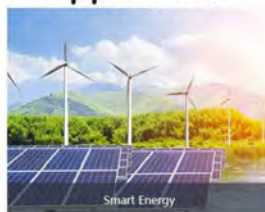
MONITOR REMOTOR DE TEMPERATURA

conexión 4G o WIFI



5. RTU WIFI Using Scenario

Application





DT-6650 Multifunction Electrical Installation Tester



Características

- 3,5 "Pantalla LCD TFT en color de 320x240 píxeles
- Rápido de bucle de corriente de prueba
- Variable RCD actual modo de configuración personalizada
- PASS/FAIL indicación para RCD pruebas
- Seleccione Medición de la tensión entre L-N... L-PE y N-PE
- Apoyo de memoria SD y USB y Bluetooth interfaz
- Memoria interna
- ¿A la tierra de panel táctil detecta planteó la tierra tensiones> 50 V indicando posibles situaciones peligrosas?

Slim sondas diseñado con botón de prueba

Fácil siempre fiable y precisa una indemnización de cables de prueba y red cuerdas

Las especificaciones					
Aislamiento					
Tensión Terminal	Rango de	Max. Resolución	Precisión	Corriente de prueba	Corriente de corto circuito
125V (0% ~ + 10)	0.125 ~ 4000MΩ	0.001MΩ	±(2% + 10)	1mA @ carga 125kΩ	≤ 1mA
250V (0% ~ + 10)	0.250 ~ 4000MΩ	0.001MΩ	±(2% + 10)	1mA @ carga 250kΩ	≤ 1mA
500V (0% ~ + 10)	0.500 ~ 4000MΩ	0.001MΩ	±(2% + 10)	1mA @ carga 500kΩ	≤ 1mA
1000V (0% ~ + 10)	1.000 ~ 4000MΩ	0.001MΩ	±(3% + 10)	1mA @ carga 1MΩ	≤ 1mA
Bajo OHM					
Rango de	Resolución	Precisión	Max Tensión de circuito abierto	Protección contra sobrecarga	
4.000Ω	0.001Ω	±(1.5% + 30)	5,8 V	250Vrms	
40.00Ω	0.01Ω	±(1.5% + 3)			
400.0Ω	0.1Ω	±(1.5% + 3)			
La continuidad de Beeper					
Rango de	Resolución	Operación de resistencia	Max Tensión de circuito abierto	Protección contra sobrecarga	
La continuidad	0.01Ω	Resistencia ≤ 35Ω	5,0 V ± 1VDC	250Vrms	
Corriente de corto circuito		≥ 200mA			
Resistencia de bucle					
L-PE (Hi-Amp)					
(Ω)	Max Resolución (Ω)		Precisión		
0,00 ~ 999	0,01		±(4% de la lectura + 6 dígitos)		
L-PE(No de viaje): medición de corriente: 15mA/rango de tensión: 195V a. C. ~ 260V a. C.(56,60Hz)					
(Ω)	Resolución (Ω)		Precisión		
0,00 ~ 999	0,01		±(5% de la lectura + 6 dígitos)		
L-N: medición de corriente: 2.0A/rango de tensión: 195V a. C. ~ 260V a. C.(56,60Hz)					
(Ω)	Max Resolución (Ω)		Precisión		
0,00 ~ 999	0,01		±(4% de la lectura + 4 dígitos)		
Prueba de RCD					
Corriente de prueba			Precisión		
X1/2 x1... x2... x5			1,5% ~ -9%		
Tensión y frecuencia					
Rango de medición (V) AC-DC		Resolución		Precisión	
80-500V/(45-400Hz)		1V		±(2% de la lectura + 2 dígitos)	



5 KV insulation resistance tester megger



- 1) cuenta con control de microordenador, menú, pantalla LCD de matriz de puntos de pantalla grande y rendimiento estable, y es el instrumento inteligente.
- 2) con una fuerte capacidad para resistir las interferencias, es aplicable a la medición en un ambiente con graves ¿La interferencia electromagnética?
- 3) está equipado con 8 engranajes de salida de voltaje, a saber, 50 V, 100V, 250 V, 500V, 1.0kV, 2.5kV, 5.0kV, (10.0kV).
- 4) medición automática de R15, R60, R600, cálculo automático de DAR, PI.
- 5) tiene una gran capacidad de carga y la corriente de cortocircuito es de aproximadamente 5mA.
- 6) rango de medición: 0 a 10TΩ, y puede cambiar el rango automáticamente.
- 7) La combinación del puntero de barra de simulación y la pantalla digital puede mostrar la tendencia de cambio de datos y resultados de medición precisos.
- 8) El Tiempo de prueba se puede mostrar en cualquier momento, y El Zumbador se tuiteará automáticamente para recordatorios cada 15 segundos.
- 9) después de completar la medición, se descarga el alto voltaje automáticamente, y el tiempo de descarga de alto voltaje es de no más de 30 segundos.
- 10) puede medir la temperatura ambiente, la humedad del aire y la fecha y hora de cada prueba automáticamente.
- 11) puede guardar 60 grupos de resultados de medición, y los datos no se pierden durante 20 años.
- 13) tiene una interfaz serial RS232, por lo tanto, puede comunicarse con los datos del ordenador.
- 14) 5 minutos de operación, el sistema automáticamente beep-prompt apagado.
- 15) tiene la función de protección perfecta integral, por lo tanto, la fiabilidad operativa es alta.

Límite superior del rango de medición	50V 10GΩ 100V 20GΩ 250V 100GΩ 500V 500GΩ 1000V 1TΩ 2.5KV 5TΩ 5KV 10TΩ
Límite inferior del rango de medición	0.1MΩ
Tensión de salida de error	± 5%
Corriente de cortocircuito	Aproximadamente 5mA
Grado de precisión	Grado 5.0
Error de base de la segunda mitad de rango de medición	±(5% · Rx + 1d)
Error básico de la primera mitad rango de medición	±(10% · Rx + 2d)
De alta tensión en el error	±(5% · Ux + 1d)
Medición de temperatura de error	± 0.5 °C
La humedad del aire de error de medición	± 2% RH
Fuente de alimentación	Batería de litio de 12,6 V
Vida útil de la batería después de cargar una vez	30 días, 10 veces DAR y 5 veces hacer la prueba de PI para cada día
Resistencia de aislamiento	> 500 MΩ (entre la línea de prueba y la caja de la máquina)
Tensión de resistencia	AC10.0kV 50Hz 1min (entre la línea de prueba y la caja de la máquina)
Trabajo de temperatura y humedad	0 °C ~ + 40 °C < 85% RH
La temperatura de almacenamiento y la humedad	-20 °C ~ + 50 °C < 90% RH
Límite de dimensión	365 (largo) X 270 (ancho) X 140 (alto) (mm)
Peso	4 kg



GM-20kV Digital Insulation Resistance Testers Meter

Descripción del producto

Para mayor seguridad, antes de usar el instrumento debe estar bien enterrado. Esto se debe a que el objetivo medido se conecta a una potencia de alto voltaje y existe una fuga de frecuencia de potencia.

Una vez que se haya iniciado el alto voltaje, no utilices el método de descarga manual para comprobar el instrumento.

Después de la prueba, espera a que el instrumento complete la descarga automática y se devuelva automáticamente a cero, entonces la descarga manual puede ser operada.

Esto se debe a que el pulso eléctrico causado por la descarga de cortocircuitos dañará la

vida de aislamiento del objeto medido; si el pulso sale al instrumento, también dañará el circuito integrado dentro del instrumento.

El instrumento está diseñado para subestaciones HV y plantas eléctricas para probar la característica del transformador HV grande, máquinas eléctricas y aparatos, cable de alimentación remoto o cable enterrado y otra resistencia al aislamiento eléctrico en un entorno de interferencia fuerte. También se puede utilizar ampliamente para probar las características de la resistencia al aislamiento en otras áreas.



1, la técnica de las especificaciones

Modo	Tensión de prueba	Precisión de tensión	Corriente de cortocircuito
GM-5kV	0,25,0,5,1,2,5,5kV	$\pm(5\% + 10 \text{ V})$	10mA
GM-10kV	0,5,1,2,5,5,10kV	$\pm(5\% + 10 \text{ V})$	10mA
GM-15kV	1,2,5,5,10,15kV	$\pm(5\% + 10 \text{ V})$	10mA
GM-20kV	0,5,1,2,5,5,10,20kV	$\pm(5\% + 10 \text{ V})$	10mA

2. Rango y precisión

Rango de	Rango de medición de resistencia	Precisión
20M Ω /500 V	0,5~19,99 M Ω	$\pm (5\% + 5 \text{ digital})$
200M Ω /1000 V	5,0~199,9 M Ω	$\pm (5\% + 5 \text{ digital})$
2G Ω	0,05~1.999 G Ω	$\pm (5\% + 5 \text{ digital})$
20G Ω	0,5~19,99 G Ω	$\pm (5\% + 5 \text{ digital})$
200G Ω	5,0~199,9 G Ω	$\pm (10\% + 10 \text{ digital})$
2000G Ω	50~1999 G Ω	Menos de 20% g Ω (+ 10 digitales) (humedad 70 70%)

El voltaje de calibración del rango M Ω es de 0.5kV; el voltaje de calibración del rango de G Ω es de 2.5

Capacidad de interferencia de campo Anti-eléctrico	2mA (50Hz)	
El cronometraje y función de alarma	El valor máximo del cronómetro es de 19 minutos y 59 segundos. 20 minutos para un ciclo. El cronómetro indicará la hora en estos puntos de tiempo: 15 segundos, 60 segundos y cada 60 segundos. Cuando se indica la hora, las lecturas de resistencia se mantienen durante 5 segundos. Si la resistencia medida está por debajo del límite inferior del rango, la lectura no es válida y el instrumento sonará continuamente para dar una alarma	
Pantalla	Medidor digital LCD de tres bits y medio (tres), muestra el voltaje de prueba, resistencia a las pruebas, Tiempo de prueba	
Fuente de alimentación	10x1. 2 vbatería (batería recargable de 2000 mAh Ni-MH), fuente de alimentación total DC12V AC: 220 V (50/60Hz)	
Las condiciones de funcionamiento	Temperatura:0~40°C	La humedad relativa:20~90%
Dimensión	315 x 240 x 155mm ³	
Peso	5 kg	



5kv 5 kv 10kv megohmmeter megger multimeter insulation



Características

- Con función de descarga automática. Cuando se mide una resistencia de aislamiento como una carga capacitiva, las cargas eléctricas almacenadas en circuitos capacitivos se descargan automáticamente después de la medición. La descarga se puede comprobar en el monitor de voltaje.
- Función de retroiluminación para facilitar el trabajo en un lugar con poca iluminación o por la noche.

- Visualización del gráfico de barras
- Advertencia de circuito en Directo Audible y visible
- Con función de apagado automático. El instrumento se apagará automáticamente si no hay cambio de función o si el botón pulsa durante 10 minutos para conservar la energía de la batería.
- Auto-medición y visualización de PI (índice de polarización), DAR (relación de absorción dieléctrica)

Especificación

Tensión nominal	250V	500V	1000V	2500V	5000V
Measuring Range	0,1 ~ 100,0MΩ	0,1 ~ 99,9MΩ 80 ~ 1000MΩ	0,1 ~ 99,9MΩ 80 ~ 999MΩ 0,80 ~ 2,00GΩ	0,1 ~ 99,9MΩ 80 ~ 999MΩ 0,80 ~ 9,99GΩ 8,0 ~ 100,0GΩ	0,1 ~ 99,9MΩ 80 ~ 999MΩ 0,80 ~ 9,99GΩ 8,0 ~ 99,9GΩ 80 ~ 2000,0GΩ
Rango de visualización	0,1 ~ 100,0 MΩ	0,1 ~ 1000 MΩ	0,1 M ~ 2,00 GΩ	0,1 M ~ 100,0 GΩ	0,1 M ~ 2000 GΩ
Tensión de circuito abierto	DC250V + 10% , -10%	DC 500V + 20%,-10%	DC 1000V + 20%,-0%	DC 2500V + 20%,-0%	DC5000V + 20%,-0%
Corriente nominal	-	-	1MΩ carga 1mA ~ 1.2mA	2.5MΩ carga 1mA ~ 1.2mA	5MΩ carga 1mA ~ 1.2mA
Corriente de cortocircuito	5mA ± 0.5mA				
Precisión	± 5% ± 3dgt				± 5% ± 3dgt ± 20%

Dimensión: 177(L) x 226(W) x 100(D)mm

Peso: aproximadamente 1,9 kg (batería incluida)

Fuente de alimentación: DC12V: LR14 (tamaño de batería alcalina C) x8pz



SOFTBI
SOLUTIONS

ETCR3500B touch screen insulation resistance test for large equipment 10KV, 5Tohm, 5mA



- 1 La combinación de pantalla táctil a color, botón y perilla de banda de onda, la función perfecta se puede probar directamente con un botón, el funcionamiento del Registro de consultas es simple y práctico.
- 2 Gran contenido de pantalla que se puede mostrar en la misma pantalla: varios modos de prueba y valor de resistencia de aislamiento, voltaje de salida y voltaje del objeto probado, corriente, Tiempo de prueba, ayuda de operación, etc.
- 3 Estructura de doble carcasa, firme y duradera, nivel de protección IP65.
- 4 Batería de litio recargable de gran capacidad.
- 5 Función de monitor de voltaje, monitoriza automáticamente la tensión real del objeto probado.
- 6 Función de temporizador de prueba, registra automáticamente el Tiempo de prueba.
- 7 Función de descarga automática, después de la prueba libera automáticamente la carga del objeto probado.
- 8 Función de tienda, almacena automáticamente 1000 grupos de datos de prueba en tiempo real con fecha, hora y tiempo de prueba.
- 9 Función de carga, los datos grabados se pueden cargar al ordenador mediante un cable de comunicación USB para el análisis de datos estadísticas


Especificación técnica

Modelo	ETCR3500B
Tensión nominal	250 V, 500 V, 1000 V, 2500 V, 5000 V, 10KV
Precisión de tensión de salida	(5% ~10%) ± 10 V
Resistencia de aislamiento de	10KV... 5TΩ... 5mA
Salida de corriente de corto circuito	≥ 5mA
Fuente de alimentación	Batería de litio recargable 5.2Ah
Índice de polarización de prueba	YEs
Absorción dieléctrica prueba de relación de	YEs
Filtro de prueba de resistencia de modo	10 S20 S, 30 S, 40 S (4 selección)
Medición de la tensión	Rango: CA/CC 0 V ~1000 V; Precisión: ±(5% + 3 V); Resolución: 1 V
Medición de corriente	Rango: 0.01nA ~ 7! 00mA; Precisión: ±(5% + 0.5nA); Resolución: 1 pA
La medición de capacitancia	Rango: 10nF ~25 uF; Precisión: ±(10% + 10nF); Resolución: 1nF
Monitor de tensión	Monitoriza el voltaje del objeto medido y monitoriza el estado de descarga después de la prueba, no se puede probar si el voltaje supera los 36 V, protege el instrumento y el operador.
TEst temporizador	Tiempo de prueba de grabación automática, rango de tiempo: 0 s ~ 9999 s
Función de almacenamiento	Almacena automáticamente los datos de prueba con fecha y hora de prueba, un total de 1000 grupos
Función de carga	Carga los datos guardados en el ordenador con el cable de comunicación USB.
Potencia de la batería de la pantalla	Con la pantalla de alimentación de la batería, cuando el voltaje de la batería es bajo le recordará que reemplace la batería
Apagado automático	Después de 15 minutos de arranque se apagará automáticamente sin ninguna operación
La dimensión del medidor	280mm × 260mm × 160mm
Metro de peso	4400g (Incluye batería)
Prueba de cable	Cable de prueba de alto voltaje de color rojo 1 pieza (con pinza de cocodrilo 1 pieza y gancho 1 pieza), cable de prueba de color verde 1 pieza, cable de prueba de color negro 1 pieza
PRotectión nivel	CPierde la carcasa IP65, abre la carcasa IP40
Ambiente de Trabajo	-20°C~50°C; 80% rh
SArrancó el medio ambiente	-25°C ~65°C; 80% rh
Resistencia de aislamiento	50MΩ (1000 v) (Entre el circuito de prueba y la carcasa)
Resistencia a tensión de	AC 3Kv 50Hz 1 min (Entre el circuito de prueba y la carcasa)
Adecuado de seguridad	IEC61010-1...IEC61326-1
Accesorios	Host: 1 pieza, Cable de prueba de alto voltaje: 1 unidad, cable de prueba (verde): 1 unidad; cable de prueba (negro): 1 unidad; clip de cocodrilo: 1 unidad; gancho 1 unidad; cable de comunicación USB 1 unidad; Software CD: 1 copia; bolsa de herramientas: 1 unidad



MS5215 Digital/Analog Display Insulation Megger 5000V Measure to 5T Ohm Short Current 5mA with USB Interface



Specifications			
Insulation Test	Operating Voltage (DC)	Measure Range	Accuracy
		250V	0.01MΩ – 2.5GΩ
	500V	2.51GΩ – 250GΩ	±(10%+15)
		0.01MΩ – 5.0GΩ	±(5.0%+5)
	1000V	5.01GΩ – 500GΩ	±(10%+10)
		0.01MΩ – 10GΩ	±(5.0%+5)
	2500V	10.1GΩ – 500GΩ	±(10%+10)
		501 GΩ – 999GΩ	±(15%+10)
	5KV	0.01MΩ – 25GΩ	±(5.0%+5)
		25.1GΩ – 500GΩ	±(10%+10)
		501GΩ – 999GΩ	±(15%+30)
		1TΩ – 2.5TΩ	±(15%+40)
Leakage Current Test	RANGE	Measure Range	Accuracy
		10nA	1.00nA – 9.99nA
	100nA	9.0nA – 99.9nA	±(15%+5)
	1000nA	100nA – 999nA	±(2.5%+5)
	10µA	0.90µA – 9.99µA	
	100µA	9.0µA – 99.9µA	
	1000µA	90µA – 999µA	
3mA	0.90mA – 3.00mA		
Voltage Test	Measure Mode	DC Voltage	AC Voltage
	Measure Range	±(50V – 1000V)	50V– 1000V (50Hz – 60Hz)
	Accuracy	±(5.0%+5)	±(5.0%+5)
	Input Impedance	Approx. 10MΩ	Approx. 10MΩ
Temperature Test	-10°C – 0.1°C	±1.5°C	
	0.1°C – 40.0°C	±1.0°C	
	40.1°C – 70.0°C	±1.5°C	
Mechanical & General Specifications			
Power supply	1.5V(LR14) x 10 batteries		
Weight	Approx. 2100g		
Size	285mm x 230mm x 125mm		
Safety rating	CAT.III 1000V .CAT IV 600V RoHS		

- Checking the insulation of high-voltage 5000V electrical equipment (electric motor, transformer and cable, etc.)
- Test voltage from 250V to 5000V
- Insulation resistance up to 5TΩ
- Short current up to 5mA
- Auto calculate PI (Polarization Index) and DAR (Dielectric Absorption Ratio)
- Step-voltage measurement
- Temperature measurement
- Temperature compensation for insulation test
- Leakage current measurement
- Data storage function and uploading to PC by USB 2.0 interface
- Timer function



ETCR5000 Analizador de harmonicas



Power Supply	Rechargeable lithium battery pack 9.6V, 4500mAH, external charger; working current is about 490mA, battery works continuously for 8 hours		
Battery Indicator	Battery symbol 5 grid Display power, when the battery power is too low, prompt automatically shut down after 1 minute		
Display Mode	LCD color screen, 640dots × 480dots, 5.6 inches, display field 116mm × 88mm		
Current Test	Current sensor: 008B; 040B; 068B; 300F (optional)		
Voltage Test	Line voltage: 1.0V ~ 2000V; phase voltage: 1.0V ~ 1000V		
Electricity Energy Parameter	W,VA,var,PF,DPF,cosφ,tanφ;Wh,Varh,Vah		
Number of Channels	4 voltages, 4 currents	Three-Phase Unbalance	Y
Frequency	40Hz~70Hz	Start Current Mode	Y,100 seconds
Harmonic Wave	0 to 50 times	Peak Value	Y
Total Harmonic Distortion	Y, 0 to 50 times, each phase	Phasor Diagram Display	automatic
Expert Mode	Y	Screenshot Capacity	60PCS
Number of Transient Record groups	150 set	Menu Language	Chinese, English
Voltage Flicker	Y	Communication Interface	USB
Record	300 days (20 parameters are recorded at the same time, 1 points are recorded every 5 seconds)		
Min/Max Recorded Value	Yes, the max min value can be measured for a period of time		
Warning	40 different types of parameter selection, 12800 group alarm logs		
Automatic Shut-down	In the alarm/trend graph recording/transient capture mode (waiting or in progress), the instrument does not automatically shut down		
	In other test modes, there is no button operation within 15 minutes, prompting to automatically shut down after 1 minute.		
Backlight Function	Yes, suitable for dark places and nighttime use		
Meter Size	240mm×170mm×68 mm		
Weight	G.W: 10.5Kg		
Safety Regulations	IEC 61010 1000V Cat III / 600V CAT IV,IEC61010-031,IEC61326,Pollution Degree 2		
Accessories	Host: 1pcs; Case: 1pcs; Cable:5pcs(yellow, green, red, blue, black); Alligator clip 5pcs; Pin 5pcs; Charger 1pcs; Soft ware 1pcs; 2Gmemory card(in host) 1pcs. Current Clamp: (optional)		

Grounding Resister Tester



Product introduction

The RK2678XM grounding resistance tester is used to measure the internal grounding resistance of electrical equipment, which it reflects the (contact) resistance between the total ground terminals of the electrical equipment. It is suitable for measuring the resistance value between the outer casing and the ground wire of various kinds of motors, electric appliances, instruments and meters, domestic appliances and so on.

This series of tester according to the following standards:

Standard for household electrical appliances (IEC6035, GB4706.1-2001, GB4706.1-1998), Standard for lamp (IEC60598-1-1999, GB7000.1-2000), Standard for information (GB8898-2001, GB12113, GB4943-2001, IEC60065, IEC60950) and so on.

- Test the maximum current 32A, it conforms to the <GB4743.1-2011 standard>.
- Test resistance, current, time are all displayed digitally.
- Test alarm value can be set arbitrarily, audible and visual alarm when it is unqualified.
- Four-Terminal measurement method can eliminate the influence of contact resistance on the measurement results.
- Test time can be set arbitrarily.
- The minimum resolution of time is 0.1s
- Over current protection, easy to operate, high reliability.
- The interface of PLC is Optional.

Technical indicators

Parameter	Type	RK2678XM
Output current		5~32A(or 5~70A, can order)
Test resistance		0~200/600mΩ
Test accuracy		±5%
Test time		0.0s~999s 0.0=continuous test
Interface of PLC		Optional
Power Requirements		200V±10% 50Hz±5%
Working environment		0°C~40°C≤85%RH
Exterior dimension		320x280x180mm
Weight		10kg/20kg
Accessory		Test line, power line



Brand: REK

HIPOT

(Voltage tester AC/DC programmed)



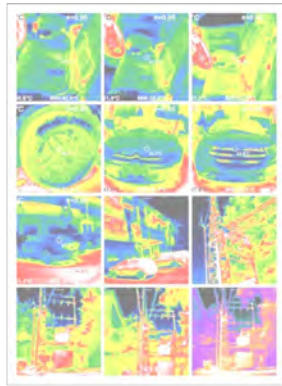
Arc detection	
Measuring range (corresponding current)	1mA-20mA
Test time	0.1s-999.9s
Output frequency	50Hz/60Hz
Input characteristics	115v/230v ±10% 50Hz/60Hz
Test alarm	buzzer, liquid crystal display, FAIL indicator
Keyboard lock	Independent keyboard lock button
Screen size	5 inch TFT LCD
Communication interface	HANDLER, RS232, RS485, USBRV (computer interface), USBHOST (U disk inter
Voltage rise time	0.1s-999.9s
Test time setting	(AC/DC) 0.2s-999.9s
Voltage fall time	0.1s-999.9s
Waiting time	16M flash, 50 test steps can be stored per file
Dimensions	(W*H*D) 430mm*105mm*350mm
Weight	17kg
Accessories	Test line, ground wire, power cord, high voltage bar

Application field

- 1, components: diodes, triodes, high-voltage silicon reactors, various electronic transformers, connectors, high-voltage electrical appliances,
- 2, household appliances: televisions, refrigerators, air conditioners, washing machines, dehumidifiers, electric blankets, chargers, etc.
- 3, insulation materials: heat shrinkable sleeve, capacitor film, high voltage bushing, insulating paper, insulated shoes, insulating rubber gloves, PCB circuit boards, etc.
- 4, instrumentation: oscilloscope, signal generator, DC power supply, switching power supply, etc.
- 5, lighting appliances: ballasts, road lights, stage lights, portable lights and other lamps,
- 6, electric appliances: electric drill, pistol drill, gas cutting machine, grinding machine, grinding machine, welding machine, etc.
- 7, wire and cable: high voltage line, cable, cable, silicone rubber cable, etc

Product Description		
Name	hi-pot tester	
Withstand voltage test	Output voltage (KV)	AC0.05-5.00 DC0.05-6.00
	Test accuracy	± (2.0% setting + 2v)
	Output accuracy	± (2.0% setting +5v) no load
	Test Current (mA)	AC 0.001mA-20mA DC 0.1uA-10mA
Insulation test	Test accuracy	± (2.0% reading + 5 words)
	Output voltage (KV)	DC0.050-1.00
	Test accuracy	± (2.0% setting + 2v)
	Test resistance	0.1M ohm-10G ohm
	Test accuracy	0.1Mohm-999M ohm ±10%
Discharge function	Automatic discharge after test	

This series of program-controlled withstand voltage tester is a high-performance safety tester designed with high-speed MCU and large-scale digital circuit. Its output voltage and output voltage rise and fall. The frequency of the output voltage is controlled by the MCU. It can display the breakdown current and voltage value in real time, and has software calibration function. It is equipped with PLC interface, RS232C, RS485, USB device and USB Host interface. It can be easily combined with computer or PLC to form a comprehensive test system. . It can quickly and accurately measure the safety of household appliances, instrumentation, lighting appliances, electric heating appliances, computers, and information machines.



Transformadores electricos



Partes mecanicas

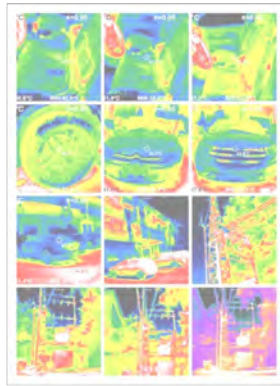


- Display:3.5 inch color display
- 2. Resolution:320*240
- 3. Total pixel:76800
- 4. FOV/Shortest focal length:56°× 42° /0.15m
- 5. Thermal sensitivity :0.07□
- 6. Measuring mode: Infrared focal plane measuring temperature
- 7. Temperature range:-20□-450□(-4□-842□)
- 8. Measuring accuracy: ≤100□ ±2□;100-300□ ±2%;≥300□ ±3%;≥400□ ±10%
- 9. Wavelength range:8-14μm
- 10. Image frequency:9HZ
- 11. Emissivity:0.1-1.0 Adjustable
- 12. Focus mode: Fixed
- 13. Palette: Iron color,rainbow,black and white
- 14. Image storage:SD card(8G)
- 15. File format: JPG
- 16. Set control: Unit Adjustment/Language/Date Time
- 17. Format/automatic shut down
- 18. Battery type: Built-in chargeable 26650 battery
- 19. Adapter voltage 5V output
- 20. Operating temperature :5□-40□
- 21. Storage temperature:-20□-50□
- 22. Humidity:<90%RH

Tuberia en pisos y muros



CAMARA TERMICA PARA MONITOREO DE INSTALACIONES ELECTRICAS, MECANICAS Y FISICAS– HTA9-AWF



Transformadores electricos



Partes mecanicas



- Display:3.5 inch color display
- 2. Resolution:320*240
- 3. Total pixel:76800
- 4. FOV/Shortest focal length:56°× 42° /0.15m
- 5. Thermal sensitivity :0.07□
- 6. Measuring mode: Infrared focal plane measuring temperature
- 7. Temperature range:-20□-450□(-4□-842□)
- 8. Measuring accuracy: ≤100□ ±2□;100-300□ ±2%;≥300□ ±3%;≥400□ ±10%
- 9. Wavelength range:8-14μm
- 10. Image frequency:9HZ
- 11. Emissivity:0.1-1.0 Adjustable
- 12. Focus mode: Fixed
- 13. Palette: Iron color,rainbow,black and white
- 14. Image storage:SD card(8G)
- 15. File format: JPG
- 16. Set control: Unit Adjustment/Language/Date Time
- 17. Format/automatic shut down
- 18. Battery type: Built-in chargeable 26650 battery
- 19. Adapter voltage 5V output
- 20. Operating temperature :5□-40□
- 21. Storage temperature:-20□-50□
- 22. Humidity:<90%RH

Tuberia en pisos y muros



CAMARA TERMICA PARA MONITOREO DE INSTALACIONES ELECTRICAS, MECANICAS Y FISICAS– HTA9-AWF



How to connect mobile phone imaging via WIFI ?



Model	HT-A9-AWF
Display screen	3.5" full angle TFT display screen
Infrared image resolution	320*240
visible image resolution	300,000 pixel
Field angle/shortest focus length	56°*42°/0.15m
Thermal sensitivity	0.07□
Temperature measurement range	-20°C~400°C(-4°F~752°F)
Measurement accuracy	$\pm \leq 100^{\circ}\text{C} \pm 2^{\circ}\text{C}$; $100\text{-}300^{\circ}\text{C} \pm 2\%$; $\geq 300^{\circ}\text{C} \pm 3\%$
Emissivity	Adjustable from 0.01 to 1.0
Frame rate of thermal image	9Hz
Wavelength coverage	8-14um
Focus mode	Fixed
Color palette	Rainbow, iron oxide red, cold color, black & white, white & black
View option	The integration of thermal image with 25% step length and visible image
Storage medium	Built-in 3G (above 20 thousand image stored)
File format	JPG
USB	Micro USD2.0
Power supply	Built-in chargeable 26650 battery
Automatic power-	Selectable: 5 minutes/20 minutes/no pow-
Product size (length*width*height)	97*129*256mm
Product weight	588g
Work temperature	0□ to 45□
Storage temperature	-20□ to 60□
Relative humidity	<85%RH



Thermal Camera Fever Alarm IR Camera Body Temp Imaging camera airport thermal imager MODEL: DPWF-22`



Parameter		Specification
Infrared Thermal Imaging	Resolution	320x240
	Frequency band	8~14um
	Frame rate	9Hz
	NETD	70mK@25℃
	Field of view	Horizontal 34.4°, vertical 25.8
	Lens	6.5mm
	Temperature range	-10~330℃
	Temperature measurement accuracy	±2°C or ±2%
	Temperature measurement	Hottest, coldest, central point, zone area temperature measurement
	Color palette	Tyrian, white hot, black hot, iron, rainbow, glory, Hottest, coldest.
Visible	Resolution	640x480
	Frame rate	25Hz
	LED light	Support
Display	Display Resolution	320x240
	Display Size	3.5 inch
	Image mode	Edge fusion, overlay fusion, picture-in-picture, infrared thermal imaging, visible light
General	Working time	>4 hours in 25°C
	Battery Charge	Built-in battery, it is recommended to use +5V & ≥2A universal USB charger
	WiFi	Support App and PC software data transmission
	Operating temperature	-20°C~+60°C
	Storage temperature	-40°C~+85°C
	Waterproof and dust-proof	IP54
	Dimension	230mm x 100mm x 90mm
	Net Weight	420g
	Package dimension	270mm x 150mm x 120mm
	Gross weight	970g
Storage	Capacity	Built-in memory, about 6.6G available, can store more than 20,000 pictures
	Picture storage mode	Simultaneous storage of infrared thermal imaging, visible light and fusion images
	File format	TIFF format, support full frame pictures temperature analysis
Interface	Data and charging interface	USB Type-C(Support charging and data transmission)



5KV portable insulation resistance tester insulation resistance



Características

¿ZWJY510A are de alta tensión de aislamiento comprobadores de resistencia con 5-(3125A) para la medición de la resistencia de aislamiento?

* Diseñado para conocer las siguientes normas de seguridad:

IEC 61010-1-2-30 (CAT IV 600V, CAT III 300V, grado de contaminación 2)

IEC 61010-031 (requisitos para mano sondas)

* Con auto-descarga la función

Cuando una resistencia de aislamiento como una carga capacitiva se mide cargas eléctricas almacenados en capacitiva circuitos automáticamente dado de alta después de la medición ¿La descarga puede ser revisado en el monitor de tensión?

* La función de luz de fondo para facilitar el trabajo en débilmente iluminado ubicación o en la noche trabajo

* Bar pantalla gráfica

* Audible y visible en Directo advertencia de circuito

* Con función de Auto-apagado para

El instrumento automáticamente se apagará si no hay función de cambio o botón de prensa por 10 min

¿Conservar la energía de la batería?

* Auto-medición y visualización de PI (índice de polarización) DAR (absorción dieléctrica Ratio)

Rango de medición y precisión

(Temperatura humedad; 23 ± 5 °C 45-75% RH)

Tensión nominal	250V	500V	1000V	2500V	5000V
Measuring Range	0,1 ~ 100.0MΩ	0,1 ~ 99.9MΩ 80 ~ 1000MΩ	0,1 ~ 99.9MΩ 80 ~ 999MΩ 0,80 ~ 2.00GΩ	0,1 ~ 99.9MΩ 80 ~ 999MΩ 0,80 ~ 9.99GΩ 8,0 ~ 100.0GΩ	0,1 ~ 99.9MΩ 80 ~ 999MΩ 8,0 ~ 99.9GΩ 80 ~ 2000GΩ
Rango de visualización	0,1 ~ 100,0 MΩ	0,1 ~ 1000 MΩ	0,1 M ~ 2,00 GΩ	0,1 M ~ 100,0 GΩ	0,1 M ~ 2000 GΩ
Tensión de circuito abierto	DC250V + 10%-10%	DC 500V + 20%-10%	DC 1000V + 20%-0%	DC 2500V + 20%-0%	DC5000V + 20%-0%
Corriente nominal			1MΩ 1mA ~ 1.2mA	2.5MΩ 1mA ~ 1.2mA	5MΩ 1mA ~ 1.2mA
Corriente de cortocircuito	5mA ± 0.5mA				
Precisión	± 5% ± 3dgt				± 5% ± 3dgt ± 20%

Rango de	250V	500V	1000V	2500V	5000V	VAC/DC
Salida en Corto-circuito	600mA					110mA
Cuando corriente nominal es salida	650mA/0.25 MΩ	800mA/0.5MΩ	1000mA/1M Ω	350mA/2.5 MΩ	350mA/5MΩ	
Salida en circuito abierto	40mA	40mA	50mA	80mA	150mA	
Stand-by	25mA					
Fondo en	El aumento por 40mA					



HM2306 10kV digital high voltage insulation resistance tester/meter



La óptica digital probador de resistencia de aislamiento se ha desarrollado utilizando el efecto Faraday de magneto-ópticos de IE660044.7 y IE-C61850 para producir un óptico digital probador de resistencia de aislamiento:

1 óptica digital probador de resistencia de aislamiento no generar radiación y pulso electromagnético. Fuerte capacidad anti-interferencia y precisa medición de datos

2 desde que la luz es un aislante el alto voltaje puede ser efectivamente aislado (para garantizar la seguridad personal de el operador) Y la precisión y la fiabilidad de la muestra de datos garantizada mientras que la supresión de ruido

3 puede hacer frente con su duro entorno de prueba?

4.5.7-pulgadas de pantalla grande pantalla real tensión

de prueba de corriente de fuga de

5 cierto descarga automática función no necesita manualmente descarga

¡6 corto-circuito 10mA fuerte capacidad anti-interferencia!

7 de alta potencia de salida de el instrumento tiempo real medición de tensión (real cargado de tensión de la muestra) corriente de fuga de medición descarga automática (Alta Tensión de medición)

8 inteligente función de voz Diseñado en estricta conformidad con las normas de seguridad tensión de salida: 500v 1000v 2500v 5000v 10000v

Modelo	10kV
Tensión nominal (KV)	500v,1000v,2500v,5000v,10kV
Medida de tensión (kV)	Tensión nominal × (1 ± 10%) Resistencia de carga menos que 1% Medición de rang
Error máximo 5% RDG Ilamó	(0.001 ~50)GΩ/10kV (0.001 ~20)GΩ/5kV (0.001 ~10)GΩ/2.5kV (0.001 ~5)GΩ/1kV (0.001 ~2)GΩ/0.5kV
Error máximo 10% RDG Ilamó	(50 ~200)GΩ/10kV (20 ~100)GΩ/5kV (10 ~50)GΩ/2.5kV (5 ~10)GΩ/1kV (2 ~5)GΩ/0.5kV
Error máximo 20% RDG Ilamó	(200 ~3000)GΩ/10kV (100 ~1000)GΩ/5kV (50 ~500)GΩ/2.5kV (10 ~200)GΩ/1kV (5 ~100)GΩ/0.5kV
La precisión no es necesario	> 4T> 5T,> 6T,> 7T,> 8T,> 9T,> 10T
Salida de corriente de cortocircuito.	≥ 10mA
Absorción relación índice de polarización rango de medición	Rango de medición: 0,01 ~99,99 Error máximo: ±(1% RDG + 1d)
Tensión de salida de error	±(3% RDG + 1d)



1200ohm Digital bucle resistencia de tierra medidor pinza en la Tierra

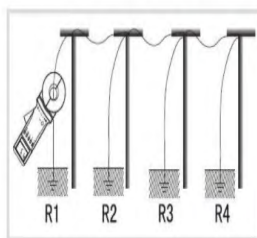
El nuevo probador de resistencia a la tierra tipo 2100 + Series se aplica ampliamente en la medición de resistencia al suelo, medición de resistencia al bucle en campos tales como energía eléctrica, telecomunicaciones, meteorología, etc al medir el sistema de tierra con bucle, no es necesario desconectar el cable de tierra sin electrodo auxiliar, Lo que significa más seguro y rápido.



Las especificaciones técnicas

Función	Prueba de resistencia al suelo, prueba de resistencia al bucle
Fuente de alimentación	6VDC 4 Uds de LR6 baterías alcalinas
Rango de resistencia	0,01-1200Ω
Resistencia de la resolución	0.001 Ω
Alta Precisión de resistencia	± 1% ±0! 01Ω
De la memoria de datos	99 conjuntos
Umbral de alarma rango de ajuste	Resistencia: 1-199 Ω
Alarma de sonido y luz	"Tono de alarma, símbolo de alarma parpadeante, pulsa la tecla AL para encender, apagar la alarma o establecer el umbral de alarma.
Interferencia de señal de reconocimiento	"Tono-pitido-tono, símbolo de ruido parpadeando
Trabajo de temperatura y humedad	-20C-55C; 20% RH-90 % RH
Pantalla LCD de pantalla	Pantalla LCD de 4 dígitos, pantalla L×W: 47mm × 28,5mm
Tamaño de la abrazadera	φ32mm
Abrazadera de apertura en	32mm
De Peso	1160g (con baterías)
Abrazadera de dimensión L×W×T:	285mm x 85mm x 56mm
Nivel de protección	Doble aislamiento
Característica estructural	Abrazadera de CT
Cambio	Cambio automático
Campo magnético externo	<40A/m
Externa campo eléctrico	<1 V/m
Un tiempo de medición	0,5 segundo
Frecuencia de medición de resistencia	> 1 KHz
Se mide la frecuencia actual	Medición automática de 50/60Hz
Indicación de batería baja	El símbolo de la batería baja se muestra cuando la batería es menor que 5,3 V
Memoria completa indicación	El símbolo mems parpadea cuando todos los 99 juegos de memoria están llenos
Por indicación de rango	De indicación de rango "OLΩ"... "LO 01" o "OL un"
Auto Power-off	5 minutos después del arranque
Consumo de energía	Máximo de 50 ma ya sea en arranque o normalmente funcionando, trabajando continuamente durante 30 horas
Interfaz RS232 (opcional)	Los datos guardados en el medidor se cargan al ordenador a través de la interfaz RS232 y el cable de datos, y luego generan archivos de informe
Accesorios	Medidor: 1 unidad, anillo de prueba: 1 unidad, maleta de metro: 1 unidad, baterías: 4 uds (LR6)

Aplicación





Test Set for Insulation Oil&Electrical Equipment

Product Features:

- 1.Multi-function ,fully automatic operation with menu navigation
- 2.Oil Dielectric Dissipation, Resistivity, Relative dielectric constant and Capacity to be measured with one instrument;
- 3.SF6 Capacitor Reference inside with tri-electrode structure, eliminate stray capacitance error upon test result;
- 4.AC-DC-AC test power design, even powered by generator, the instrument can operate normally;
- 5.Heat oil cup by High-frequency inductive principle, PID
- 6.Over- voltage over - current , short circuit protection
- 7.Automatic calibrating to ensure test accuracy
- 8.LCD display, Micro-Printer inside;
- 9.Date,time display, test data storage;
- 10.Automatic oil drain function can be made to order

algorithm,non-contact, short – time, uniform heating, temperature easy to be controlled



Technical Specifications:

- 1.Power consumption: 1000W
- 2.Test voltage range: AC 500~2200V AC/50Hz,variable continuously
DC 0~500V, variable continuously
- 3.Temperature test range: 0~125°C
- 4.Dielectric Dissipation Test range : 0.00001~100
- 5.Accuracy: $\pm(\text{reading} \times 1\% + 0.0001)$ Minimum resolution : 0.00001
- 6.Resistivity :Measurement range: 2.5 M Ω .m~20T Ω .m Accuracy: $\pm 10\%$ Minimum resolution: 0.001M Ω .m
- 7.Relative dielectric constant: Test range:1.000~30.000 Accuracy: $\pm 1\%$ reading Minimum resolution: 0.001
- 8.Capacity: Test Range:5pF~200Pf Accuracy: $\pm(\text{reading} \times 1\% + 0.5\text{pF})$ Minimum resolution:0.01pF
- 9.Environmental condition: Working temperature: 0 ° C~40 ° C Relative humidity: $\leq 75\%$ RH, no dew

Probador de Resistencia a tierra

HT3001 El probador de resistencia a tierra de resistividad, también llamado suelo probador de resistividad, es un instrumento de uso común para medir medidores de resistencia a tierra de uso común.



2Especificación General

Función	Dos tres medidas de cuatro hilos Resistencia a tierra, resistencia al suelo; Voltaje de tierra, medición de voltaje de ca
Rango de	Resistencia de puesta: 0,00 Ω ~30,00k Ω
	De la resistividad del suelo: 0,00 Ωm ~9999kΩm
	Voltaje de puesta a tierra: 0,00V ~100,0 V
Modo de medición	Cuatro cables precisos, Medición de tres hilos, medición simple de dos hilos
Los métodos de medición	Resistencia a la tierra: método del poste de cambio de corriente nominal Resistividad del suelo: método de cuatro polos Tensión de tierra: rectificación media (entre una interfaz de S-ES)
Frecuencia de prueba	128Hz
Corto circuito corriente de prueba	> 20 ma (onda sinusoidal)
Tensión de prueba de circuito abierto	AC 28 V max
Electrodo de espaciado de	Se puede configurar 1 m ~100 m
Cambio de marcha	Totalmente automática cambio 0,00 Ω ~30,00k Ω
	Totalmente automática cambio 0,00 Ωm ~9000kΩm
Retroiluminación	Luz de fondo de pantalla gris controlable, adecuada para usar en lugares dim
Modo de visualización	Pantalla LCD grande de 4 bits, luz de fondo gris
Medición de las instrucciones	LED indicador intermitente durante la medición
Tamaño de LCD	111mm × 68mm
Pantalla LCD de campo	108mm × 65mm
Tamaño del instrumento	L/W/H:277,2mm × 227,5mm × 153mm
Prueba Estándar longitud de línea	4 tiras:Rojo 15 m, Negro 15 m, amarillo 10 m, Verde 10 m cada uno
Simple línea de prueba	2 tiras: Amarillo, 1,6 m, Verde, 1,6 m cada uno
Auxiliar de tierra rod	4 Uds:Y phi; 10mm × 200mm
Consumo de energía	Modo de espera: 40 ma máx. (luz de fondo apagada)
	Luz de fondo de encendido: alrededor de 43mA
	De medición:75mA Max. (luz de fondo apagada)
Peso	Instrumento:2450 (incluida la batería)
	Líneas de prueba:1300g Auxiliar de tierra varilla:850g (4 uds)
Trabajo de temperatura y humedad	-10°C ~40°C; Por debajo de 80% rh
La temperatura de almacenamiento y la humedad	-20°C ~60°C; Por debajo de 70% rh
Protección contra sobrecarga	Puesta a tierra, resistencia: Ca 280 V/3 segundos entre H-E y S-ES puertos
Resistencia de aislamiento	Más de 20 mΩ (500 V entre circuito y carcasa)
Resistencia a la presión	AC 3700 V/rms (entre circuito y carcasa)
Las propiedades electromagnéticas	IEC61326 (EMC)
Adecuado para las normas de seguridad	IEC61010-1 (CAT III 300 VCAT IV 150 V, Nivel de contaminación 2); IEC61010-031; IEC61557-1 (resistencia a tierra); IEC61557-5 (resistividad del suelo); UG 366-2004

II especificación técnica

1. Alcance y la precisión de error

Función de medición	Rango de medición	Precisión	Resolución
Resistencia de puesta (R)	0,00 Ω ~30,00 Ω	± 2% rdgs5dgt (observación 1)	0,01 Ω
	30,0 Ω ~300,0 Ω	± 2% rdgs3dgt	0,1 Ω
	300Ω ~3000Ω	± 2% rdgs3dgt	1Ω
	3,00k Ω ~30,00k Ω	± 2% rdgs3dgt	10Ω
De la resistividad del suelo (Y rho:)	0,00Ωm~99,99 Ωm	Y rho: = 2 y pl; aR (observación 2)	0,01 Ωm
	100,0 Ωm ~999,9 Ωm		0,1 Ωm
	1000Ωm ~9999Ωm		1Ωm
	10,00k Ωm ~99,99k Ωm		10Ωm
	100,0k Ωm ~999,9k Ωm		100Ωm
1000kΩm ~9999kΩm	1kΩm		
Tierra de tensión	AC 0,00 ~100,0 V	± 2% rdgs3dgt	0,01 V



Micro ohmímetro GDHL-200A inteligente de contacto comprobador de resistencia



Fuente de alimentación	AC220V ± 10% 50Hz
Consumo de energía	≤ 1000W
Actual pasos	50A... 100A... 150A... 200A
Rango de medición	1-99999μΩ 50A:1μΩ-99999μΩ; 100A:1μΩ-50000μΩ; 150A:1μΩ-33000μΩ; 200A:1μΩ-25000μΩ;
Precisión	± (Lecturas * 0.5% + 0.1uΩ)
Resolución	0.01uΩ
Pantalla Digital de resistencia	6 1/2 dígitos
Voltaje de salida de la fuente de corriente constante	≤ 5V
Tiempo de medición	Múltiples prueba pasos son opcionales
Las condiciones de uso	-20 °C ~ 40 °C... ≤ 80% RH (sin condensación)
Peso	<5kg
De almacenamiento de datos	1000 sets

Descripción:

De alta precisión de alimentación de corriente constante automático aumento actual modo sin ajuste manual. La prueba es rápido y preciso?

* El uso de cuatro-terminal método de cableado efectivamente eliminar la interferencia producida por cable de prueba de resistencia;

¡* Amplia gama alta precisión el rango de medición de resistencia que 99mΩ!

* En 200A. Prueba de tiempo puede llegar a 1 ~ 999s que se reúne varios en el sitio;

* Gran salida de corriente para un largo tiempo quemando el interruptor película de óxido que la medida más real

* Con construido en estándar resistencia en tiempo real-en interior y exterior cableado condición para mejorar la prueba de fiabilidad

* Pantalla de resistencia actual de tiempo la situación y la prontitud de la información en la misma pantalla manual diseño de la interfaz de operación simple y fácil de usar

* Estable corriente de salida con múltiples marchas de la salida de las corrientes y la prueba de resistencia rango es de

¡* Largo tiempo de trabajo y tiene perfecto funciones de protección como de circuito abierto protección y protección de sobrecalentamiento!

* 4,7 pulgadas de pantalla grande pantalla color LCD con alta brillo legible en la luz del sol;

* Construido en impresora térmica fácil a los datos de

impresión;

* 1000 conjuntos de datos de almacenamiento

¿* Tipo europeo manejar rápido conjunta y cierre de diseño de gran superficie de contacto y fuerte capacidad de flujo?

* Combinado chasis plan de configuración de los usuarios pueden combinar fácilmente instrumentos y accesorios

¿* Cuenta general de embalaje y transporte para que los usuarios tienen una experiencia más relajada?

* El diseño integral de tipo de elevación y el desmontaje y montaje de la estructura de esqueleto tipo conveniente para inspección y mantenimiento

* La estructura embebida de toda la máquina se dispersa el estrés; Absorción de choque y de tratamiento de garantizar la fiabilidad de la logística

¿* En forma de cuña desviación conducto de aire mejorar la capacidad de disipación de calor ampliar considerablemente la vida de servicio?

¿* Pequeño volumen de peso no superior a 5kg que es muy adecuado para en el uso del sitio?

* Equipado con interfaz USB o la interfaz Bluetooth función el anfitrión puede ser conectado con PC o tableta computadora teléfono móvil etc. A través de cable o inalámbrico para controlar el dispositivo y generar informe de prueba a través de la computadora host o APP (Opcional)





Micro ohmímetro GDHL-200A inteligente de contacto comprobador de resistencia

IEC 100A 200A Contact Resistance and Loop Resistance Tester's Introduction:

According to the requirements of the new power Preventive testing procedures, conductive loop resistance testing of various switching devices is must be measured, whose testing current can not be less than 100A, Continuous Current time shall not be less than one minute.

IEC 100A 200A Contact Resistance and Loop Resistance Tester's Features:

- constant current output, open circuit voltage up to 10V
- output current of the instrument is large ,light weight
- possessing perfect protection circuit, reliability
- With one minute testing function, meeting the specified test

IEC 100A 200A Contact Resistance and Loop Resistance Tester's Parameters:

Output current : 200A/100A
 Open circuit voltage : 10V
 Measurement time :1min
 Measurement range :0~9.99 mΩ /19.99mΩ
 Resolution :1μΩ
 Accuracy :± (0.5% rdg +2words)
 Dimensions : 300mm * 230mm * 220mm
 Instrument weight :7Kg
 200A digital loop resistance tester's conditions:
 Temperature: -10℃~50℃
 Humidity: ≤85%RH
 Power supply: AC100~240V
 Power frequency: 50±1Hz





HTHL-100A 200A Portable Digital 100A Contact Loop Resistance Tester Micro Ohmmeter



Nowadays Power Systems widely use model QJ44 DC double arm bridge to measure contact resistance (DC resistance and Loop resistance of high-voltage circuit breaker) while the minimum current of such model is 1mA which hardly find the decrease of cross-sectional area of transformers' conductive circuit conductor. The measurement of loop resistance of high voltage switchgear is affected by oil layer and oxide between static and dynamic contact port, so the resistance measurement value will be several times larger, and cannot reflect the true value of contact resistance. Therefore, the Ministry of Electric Power in national standards SD301-88 "AC 500KV Electrical Equipment Transfer and Preventive Test Procedure" and new version of "Electrical Equipment Preventive Test Procedure" stipulate that the testing current of circuit breaker and

isolating switch contact resistance is not less than 100A to ensure accurate test results.

HTHL-100A Micro ohmmeter measures up to the latest power system standards--DL/T845.4-2004 designed for measuring loop resistance of Switching Control Equipment using High-frequency switching power supply technology and digital circuit technology. Test current of the Tester is DC 100A which is recommended in the national standards. The tester can measure the loop resistance at this value and display the result in digital. It is high precision and good stability and can meet most power systems' requirements in onsite high-voltage switches maintenance and high-voltage switches factory loop resistance measurement. (It performs accurately and stably)

Product parameters

Measurement range	0~1999 $\mu\Omega$
Resolution	1 $\mu\Omega$
Measured current	DC 100A
Accuracy	0.5% \pm 1d
Display	3-1/2 LCD
Power supply	AC220V \pm 10% 50Hz
Service conditions	Temperature -10 $^{\circ}$ C~40 $^{\circ}$ C, humidity: \leq 80%RH
Dimension	300 \times 270 \times 200 mm
Weight	5Kg(not including accessory)



GDHL-200A Digital Contact Resistance Tester Micro Ohmmeter



- **GDHL-200A Digital Contact Resistance Tester Micro Ohmmeter** is to test the contact resistance of circuit breaker or high current cable contacts.
- **GDHL-200A Digital Contact Resistance Tester Micro Ohmmeter** is designed according to **IEC62271**. The main application of the Resistance Micro-Ohmmeter is measurement of circuit breaker contact resistance.
- All the test results of the Micro-Ohmmeter could be print by the **micro-printer** which is integrated in the tester.
- Also all the test results saved in the tester could be upload to PC computer and then convert to MS WORD document.



Technique Index:

1	Measurement range: 0-1999.9 $\mu\Omega$ Resolution: 0.1 $\mu\Omega$
2	Test current: DC 200A/100A for different selection
3	Maximum error < 0.5 %RDG+0.05%FS
4	Display mode: LCD
5	Save no more than 100 groups of data
6	RS232 computer interface
7	Rated power supply: AC220V
8	Size: 340 × 280 × 210mm ³
9	Environment temperature: -10°C~+40°C Relative humidity < 80%
10	Weight: < 17kg



IEC Standard 200A Micro ohmmeter Digital Circuit Breaker Contact Resistance Test Set



HZ-5200 Circuit resistance instrument is a carefully developed high precision, digital switch detection instrument by the IEC standard And PRC's Latest electric power execution standard DL/T845.4-2004 Regulations. The Instrument adopt High frequency high power Constant current switching power supply technology to detect the Micro ohm contact resistance. The Instrument is widely used for Varieties of the switches and Contact resistance of switches and electrical appliances, Circuit resistance and Power cables, contact resistance of welding seam detection. The measurement data is accurate and correct, high stability and satisfy the requirements of Power, power supply department on-site high-voltage switch repair And high voltage switch factory circuit resistance test. The output current and measurement resistance simultaneously output to the 65K true color LCD Display. Testing results can be stored in the U-flash disk. Power down storage can meet the data query at any time

1. Measuring the large current, fully meet the National standard requirements of measurements Contact resistance related.
2. Output high voltage, measurement range is wide.
3. The test current comes from the high precision current constant current power supply, without manual adjustment, the test is fast and accurate.
4. Four terminal connection methods are adopted to effectively eliminate the influence of the test line resistance on the test results.
5. 320X240 dot matrix ultra small pixel dot 65K true color LCD.
6. Instrument with a calendar clock and power down memory, can store the test data at any time
7. The instrument is equipped with a micro printer, RS232 and USB interface, and computer communication, U disk storage

Current measurement	50A, 100A, 150A, 200A
Range	0~100mΩ(50A) 0~50mΩ(100A) 0~20mΩ(150A) 0~20mΩ(200A)
Resolution	0.1μΩ At Min.
Precision	±(0.5%±2)
Power consumption	1000W
Working method	Continuous measurement.
Power supply	Base on your request, RH less than 90%, no dew
Size	355*275*147mm
Weight	9.05KG

Complete set

Host	1set
Testing wire	1set
Power wire	1pcs
Fuse	2pcs
Operation menu	1pcs
Data wire	1pcs
Certificate	1pcs
Packing list	1pcs
Earth wire	1pcs
Testing report	1pcs



Automatic circuit breaker analyzer best price circuit breaker analysis



1. Performance

- Time: 12 inherent in the fracture points, closing time, with the same period, and white the same period.
- Reclosing: each fracture together - sub, sub - together, sub - Hopewell - sub-process time: one point, a time is the time of the two-in-gold short time, current time value.
- Speed: just now, just closing speed, maximum speed, time - stroke characteristic curve.
- Stroke: total trip, open distance, over-travel, the overshoot travel, rebound amplitude.
- Current: points, closing coil points, closing the current value, the current waveform diagram.
- Operating Voltage: DC30 ~ 250V/20A digital machine adjustable breaker operation power supply, to automatically complete low voltage operation test of the breaker, measuring the value of the operating voltage of the circuit breaker.

2. Characteristics

- All models suitable for domestic and foreign production of SF6 switchgear, GIS combination of electrical, vacuum switch, oil switch mechanical properties test
- Super anti-jamming capability, 500KV substation the bypass bus charged case can easily test to accurately measure.
- Universal speed sensor, straight line linear sensor, rotary sensor, extremely easy to install and simple.
- Switching operation once obtained the switch mechanical properties testing of all data and the corresponding waveform Spectrum.
- The host field test data, the machine can be stored in the real-time clock, easy to the archive save the test date, time.

Service condition	Input power	220V±10% 50Hz±10%
	Atmospheric pressure	86~106kpa °C
	Temperature	-10~40 °C
	Humidity	<80%RH
Safety Performance	Insulation resistance	>2MΩ
	Dielectric strength	Power to chassis frequency voltage withstands 1.5KV, 1 min, no flashover and arcing.
Basic parameters	Time	Range: 4000.0ms, resolution: 0.1ms error: < 100ms, 0.1ms±1d >100ms, 0.1%±1d synchronous
	Speed	Range: 20.00m/s, resolution 0.01m/s error:0-2m/s : ±0.1m/s±1d >2m/s, ±0.2m/s±1d
	Range	Vacuum Circuit Breaker: range-50.0mm, resolution-0.1mm, error-1%±1d SF6 Circuit Breaker: range-300.0mm, resolution-1mm, error-1%±1d Oil-minimum breaker: range-600.0mm, resolution-1mm, error-1%±1d
	Current	Range: 20.00A, resolution: 0.01A
	Output power	DC30~250V digitally adjustable /20A (Instantaneous)
	Dimension	360×280×300mm3
	Weight	9kg



100A 200A 600A high voltage circuit breaker contact resistance tester circuit breaker analyzer



PS-HZ100
PS-HZ200



PS-HZ300
PS-HZ600



INFORMACION

- The test current is large and fully meets the national standard requirements for the test contact resistance.
- The output voltage is high and the measurement range is wide.
- The test current comes from high precision current constant current power supply without manual adjustment, and the test is fast and accurate.
- The effect of the test line resistance on the test results is effectively eliminated by using the four terminal wiring method.
- The test speed is fast, and the data is displayed around 10 seconds.
- The instrument uses the 128X64 dot matrix LCD screen, which is all displayed in Chinese and is convenient for the customers to use.
- The instrument has the function of real-time printing of test data.
- Intelligent power management technology, the instrument is always working in the minimum power state, effectively reducing the internal heat of the instrument and saving energy.
- The instrument has the function of clock and data storage, which is convenient for users to query and manage the test data.
- The instrument is equipped with a thermosensitive printer that can print the test data in real time.

Technical Parameter

Parameter	Model	PS-HZ100	PS-HZ200	PS-HZ300	PS-HZ600
Test current		100A	100A/200A	100A/200A/300A	100A/200A/300A/600A
Range		0-50 mΩ (100A)	0-50 mΩ (100A) 0-25 mΩ (200A)	0-50 mΩ (100A) 0-25 mΩ (200A) 0-15 mΩ (300A)	0-50 mΩ (100A) 0-25 mΩ (200A) 0-15 mΩ (300A) 0-8 mΩ (600A)
Resolution		Minimum 0.1μΩ			
Accuracy		± (0.5% ± 2digits)			
Power		1000W	1000W	3000W	6000W
Operation mode		Continuous measurement			
Power voltage		AC220V±10% 50HZ			
Working temperature		0-40°C			
Relative humidity		≤90% non condensation			



GM-20kV Digital Insulation Resistance Testers Meter Megohmmeter Megger Voltmeter 20kV 2000Gohm



1. With strong anti-electric field interference ability up to 2mA (50Hz), it is suitable for 500kV substation without dismantling wire to test insulation resistance of 500kV large-scale transformer.
2. The short-circuit current of test power > 5mA, maximum up to 15mA. Be suitable for testing high capacity and high inductance.
3. Wide resistance range from 0.5MΩ ~ 200000MΩ. With high-resolution, having accurate readings.
4. Wide voltage range: 0.5kV, 1kV, 2.5kV, 5kV, 10kV, 20 kV, you can smoothly adjust voltage from 0V to the desired value.
5. With timekeeping function, remind users to record, and analyze absorbance and polarization index of measured target.



01 Sound and light reminder

With time-keeping function to remind users to record and analyze the absorption ratio and polarization index of the measured object



02 High quality

All key components are imported components to ensure accurate measurement accuracy



03 Easy to use

Integrated case, small size, light weight, easy to carry



04 Beautiful appearance

The use of sturdy and abrasive materials makes the overall texture and service life of the instrument longer

1. Technique specifications

Mode	Test voltage	Voltage accuracy	Short-circuit current
GM-5kV	0.25,0.5,1,2.5,5kV	±(5%+10V)	10mA
GM-10kV	0.5,1,2.5,5,10kV	±(5%+10V)	10mA
GM-15kV	1,2.5,5,10,15kV	±(5%+10V)	10mA
GM-20kV	0.5,1,2.5,5,10,20kV	±(5%+10V)	10mA

2. Range and accuracy

Range	Resistance measurement range	Accuracy
20MΩ/500V	0.5~19.99 MΩ	±(5%+5digital)
200MΩ/1000V	5.0~199.9 MΩ	±(5%+5digital)
2GΩ	0.05~1.999 GΩ	±(5%+5digital)
20GΩ	0.5~19.99 GΩ	±(5%+5digital)
200GΩ	5.0~199.9 GΩ	±(10%+10digital)
2000GΩ	50~1999 GΩ	Less than 1000GΩ ± (20% + 10 digital) (humidity ≤70%)

Calibration voltage of MΩ range is 0.5kV; Calibration voltage of GΩ range is 2.5kV

Anti-electric field interference ability	2mA(50Hz)	
Timekeeping and alarm function	maximum value of stopwatch is 19 minutes and 59 seconds. 20 minutes for a cycle. The stopwatch will tell the time at these time points: 15 seconds, 60 seconds and every 60 seconds. When telling time, resistance readings hold for 5 seconds. If the measured resistance is below the lower limit of range, the reading is invalid and the instrument will continuously sound to give an alarm	
Display	three and a half bits LCD digital meter (three), respectively show test voltage, test resistance, test time	
Power supply	10×1.2Vbattery(2000mAh NI-MH rechargeable battery), total DC12V power supply AC: 220V (50/60Hz)	
Operating Conditions	Temperature:0~40°C	Relative humidity:20~90%
Dimension	315×240×155mm ³	
Weight	5kg	



Rechargeable lithium battery clamp earth resistance tester manufacturers/ soil resistance measurement



Product Name: 2019 hotsale rechargeable lithium battery clamp earth resistance tester manufacturers, soil resistance measurement
Function: grounding resistance, soil resistivity; Ground voltage, AC voltage measurement
Soil Resistivity Range: 0.00Ωm~1kΩm
Resistance Range: 0.00Ω~100.0kΩ
Voltage Range: AC 0.0~600V
Measurement Method: precision four-wire, three-wire measurement, simple two-wire measurement

Line Voltage: measure below AC 100V
Application: ST2241 soil resistivity earth resistance tester is adopted the latest digital and micro-processing technology and can accurately detect ground resistance, soil resistivity, and ground voltage. It uses a fast filtering technique to minimize interference. Displaying the resistance value of the auxiliary electrode in the same screen, which is convenient for judging the measurement error caused by environmental factors, facilitating more accurate measurement of the grounding true resistance value. Widely used in telecommunications, electricity, meteorology, computer rooms, oil fields, power distribution lines, iron tower transmission lines, gas stations, factory grounding networks, lightning rods and so on. The instrument has the characteristics of precise, fast, simple, stable and reliable



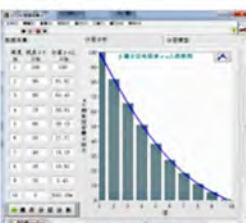
Impact	Benchmark condition	Working conditions	Note
Auxiliary grounding resistance value	< 100Ω	< 100kΩ	rC, rP
Electrode distance when measuring R	a > 5d	a > 5d	----
Electrode distance when measuring ρ	a > 20h	a > 20h	----
Ambient temperature	23°C ± 1°C	-10°C ~ 40°C	----
Environment wet crossing	40% ~ 60%	< 80%	----

2.2. General specifications

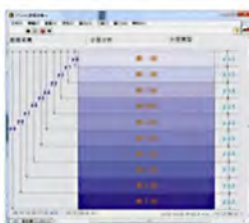
Function	Two, three or four wires measure ground resistance and soil resistivity; Ground voltage, AC voltage measurement
Power supply	DC 8.4V (2 rechargeable lithium batteries)
Range	Ground resistance: 0.00Ω~100.0kΩ Soil resistivity: 0.00Ωm ~ 1kΩm (then multiplied by the coefficient 2πa)
Measurement method	Precision 4-wire, 3-wire measurement, simple 2-wire measurement of ground resistance
Short-circuit test current	AC ± 20mA max
Open circuit test voltage	AC ± 20V max
Test voltage waveform	square wave (1KHz)
Electrode pitch range	can be set from 1m to 10m
Standard test line	4 strips: 2 strips of 20m length, 2 strips of 10m length
Simple test lead	2 strips: 1.0m yellow, 1 each green 1.0m
Auxiliary ground rod	4 pieces: φ10mm×150mm
Line voltage	AC 600V or less
USB interface	With USB interface, software real-time monitoring, stored data can be uploaded to the computer, save and print, soil layer analysis and other functions
Communication line	1 USB cable, 1.5m long
Auxiliary ground test	With auxiliary ground resistance value test function, but must meet R + rC < 50kΩ, R + rP < 50kΩ R is the measured ground resistance
Working temperature and humidity	-10°C~40°C;
Storage temperature and humidity	-20°C~60°C;



Data collection interface



Layered analysis interface



Layered model interface



ETCR3000C Digital earth resistance tester for electrical equipment rechargeable lithium battery ground resistance measurement

ETCR3000C Digital earth resistance tester for electrical equipment rechargeable lithium battery ground resistance measurement



Earth Resistance	Range:0.01Ω~2000Ω	Resolution:0.01Ω	Accuracy:±2%rdg±3dgt
Earth Voltage	Range:0~600V AC	Resolution:1V	Accuracy:±2%rdg±3dgt
Power Supply	DC 7.4V 2600mAh rechargeable lithium battery		
Tester Dimension	280mm(L)×260mm(W)×160mm(H)		
Weight	4520g(with package)		
Measuring Method	Earth ground resistance: rated current change-pole method, measurement current 3mA Max,820Hz; Earth Voltage: average value rectification		
Measuring time	Earth voltage : 3 times/second; Earth resistance: 15 seconds/time		
Data Storage	400 sets, flash "FULL" symbol to indicate storage is full		
Data Hold	Data hold function:"HOLD" symbol display		
Data Read	Data read function: "READ" symbol display		
Overflow Display	Exceeding measuring range overflow function: "OL" symbol display		
Circuit Voltage	Measuring earth voltage : AC 600V MAX		
Auxiliary Earth Rod	2 PCS: Φ10mm×150mm		
Testing Wires	Five wires: each for Red 20m, yellow 10m, green 5m, red 1.6m, green 1.6m		
Interface	USB interface,software supervision, storage data can be uploaded to computer, saved and printed;data transmission line length:1.5m		
Wire Resistance Verification	Avoid errors caused by the test line not fully inserted into the Instrument interface or poor contact or the user replaces the lengthened test line, ensure grounding resistance measurement more accurate		
Alarm Function	Measuring value exceeds alarm setting value, will "Toot-toot-toot" alarm hint		
Auto Power-off	10 Minutes after power on, will outage and automatic power off		
Battery Voltage	While battery voltage decreases to around 7.8V, will display battery voltage low symbol, and reminding to replace the battery		
Overload Protection	Earth resistance: between each interfaces of E-P,E-C, AC 280V/3 seconds		
Protection Level	IP65(close the case status)		
Working current	Backlight:25mA Max; System standby: 25mA Max(Backlight shut off); Measurement:70mA Max(Backlight shut off)		
Accessories	Tester:1PC; Earth Rod:2PCS; Testing Wire:3PCS; Simple testing wire:2PCS; USB data transmission line :1PCS; Software disk:1PC; Tester bag:1PC; Special charger:1PCS		





ETCR3200 Double Clamp Earth Ground Resistance Soil Resistivity Tester Meter



Auto Power-off	No
Power Consumption	No Backlight: 45mA Max(turn off Backlight); testing:100mA Max(turn off Backlight)
Working environment	-10°C~40°C;below 80%rh
Store environment	-20°C~60°C;below 70%rh
Test method	Precision three-wire measurement, simple two-wire measurement
Measurement method	2/3/4- pole method: change-pole method, measure current 20mA Max Selection method: change-pole method, measure current 20mA Max Double clamp method: mutual inductance method, measure current 1mA Max Soil Resistivity: 4-pole measurement (Wenner method) Earth Voltage: average rectification(between P(S)-ES) AC current: clamp mutual inductance method
Data Mode	Average value, maximum, minimum
Cable resistance verification	Avoid error caused by testing wire such as failed to be fully inserted into tester interface or by poor contact or by user's replacing or lengthening testing wires, making it more accurate for earth ground resistance measurement.
Measurement Time	Ground Voltage:3 S/time ; Ground Resistance:5 S/time;
Measuring Times	Over 5000 times (20Ω range measuring 10Ω for one time and repeat after 25 seconds)
Circuit Voltage	Measuring ground voltage : measuring below AC 600V
Data Hold display	"HOLD"
Data Read display	"READ"
Overflow Display	"OL"
Alarm Function	When measuring value exceeds alarm setting value, there is "Tool-tool-alarm hint"
Battery Voltage	When battery voltage decreases to about 7.8V, battery voltage low icon " will display, reminding to replace battery.
Overload Protection	Ground resistance: between each interfaces of E-P,E-C, AC 280V/3 seconds
Insulation Resistance	Over 10MΩ(between circuit and enclosure it is 500V)
Withstanding Voltage	AC 3700V/rms (Between circuit and enclosure)
Electromagnetic Features	IEC61010-4-3,Wireless frequency electromagnetic field≤1V/m
Protection Type	IEC61010-1,IEC1010-2-31,IEC61557-1,5,IEC60529(IP54),Pollution 2,CAT III 300V
Weight	1443g (with battery)
Dimension	215mm×190mm×95mm



ETCR3200C Multifunction Double Clamp Ground Resistance Tester Meter

New Product! ETCR3200C Multifunction Double Clamp Ground Resistance Tester Meter



Model	ETCR3200C Double Clamp Grounding Resistance Tester		
2/3/4 pole Method Measure Grounding Resistance(R)	Range:0.00Ω~30.00Ω;	Resolution:0.01Ω;	Accuracy:±2%rdg±3dgt
	Range:30.0Ω~300.0Ω;	Resolution:0.1Ω;	Accuracy:±2%rdg±3dgt
	Range:300Ω~3000Ω;	Resolution:1Ω;	Accuracy:±2%rdg±3dgt
	Range:3.00kΩ~30kΩ;	Resolution:10Ω;	Accuracy:±4%rdg±3dgt
Selection Method Measure Grounding Resistance(R)	Range:0.00Ω~30.00Ω;	Resolution:0.01Ω;	Accuracy:±2%rdg±3dgt
	Range:30.0Ω~300.0Ω;	Resolution:0.1Ω;	Accuracy:±2%rdg±3dgt
	Range:300Ω~3000Ω;	Resolution:1Ω;	Accuracy:±2%rdg±3dgt
Earth Voltage	Range:0.0~100V AC;	Resolution:0.1V;	Accuracy:±2%rdg±3dgt
AC current	Range:0.00mA~600.0A	Resolution:0.0mA;	Accuracy:±2%rdg±3dgt
Soil Resistivity (ρ)	Range:0.00Ωm~99.99Ωm;	Resolution:0.01Ωm	Accuracy :According to the precision of R (ρ=2πaR, a:1 m-100m, π=3.14)
	Range:100.0Ωm~999.9Ωm;	Resolution:0.1Ωm	
	Range:1000Ωm~9999Ωm;	Resolution:1Ωm	
	Range:10.00kΩm~99.99kΩm;	Resolution:10Ωm	
	Range:100.0kΩm~999.9kΩm;	Resolution:100Ωm	
Measurement Method	2/3/4 pole method measurement: Change-pole method, measure current 20mA Max		
	Selection method measurement: Change-pole method, measure current 20mA Max		
Power Supply	DC 7.4V 2600mAh rechargeable lithium battery		
	Test Frequency 128Hz/111Hz/105Hz/94Hz(AFC)		
Short-circuit Test Current	AC 20mA max	Open-circuit Test Current	AC 40V max
Data Storage	2000 groups	Test Voltage Wave	Sine wave
Data Hold	Data hold function: "HOLD" symbol display	Data Access	Data access function: "READ" symbol display
Overload Display	Exceed measure range overflow function: "OL" symbol display	Current Clamp	Caliber:φ68mm;Connecting line:2M
Tester Dimension	280mm(L)×260mm(W)×160mm(H)		
LCD Dimension	LCD Frame Dimension: 128mm×75mm; LCD Display Dimension:124mm×67mm		
Total Weight	6690g(include package)		
Test Wires	Red 20m, black 20m, yellow 10m, green 10m, red 1.6m, black 1.6m (total 6 pcs wires)		
Working Current	Standby: around 45mA (Backlight close 25mA); Measurement:100mA (Backlight close)		
Auxiliary Ground Rod	4PCS:φ10mm×150mm		
USB Interface	With USB interface,software monitoring, storage data can be uploaded to computer, saved and printed		
Interference Test	Automatic recognition of interference signal , interference voltage higher than 5V will display "NOISE" symbol		
Auxiliary Grounding Test	Auxiliary ground resistance test function: 0.00kΩ~30kΩ(100R+rC<50kΩ,100R+rP<50kΩ)		
Alarm Function	Measure value exceed alarm setting value, will "Toot-toot-toot" alarm indication		
Battery Voltage	While battery voltage decreases to around DC 7.2V±0.1V, will display low battery voltage symbol", and remind to replace the battery		
Overload Protection	Measuring earth resistance: between each interfaces of C(H)-E,P(S)-ES, AC 280V/3 seconds		
Protection Level	IP65(close the case status)		
Accessories	Tester:1PC;Current Clamp Sensor:2pcs; Ground Rod:4PCS; Testing wires:6PCS; USB data transmission cable:1PCS; Software CD:1 COPY; Tester bag:1PCS; Special charger:1PCS		



SMART AR3125 500 - 5000V Digital Megohmmeter Voltage Tester Ohm Meter Insulation Resistance Tester

SMART AR3125 500 - 5000V Digital Megohmmeter Voltage Tester Ohm Meter Insulation Resistance Tester



AR3125

Rated voltage	500V / 1000V / 2500V / 5000V
Open Circuit Voltage	DC 500V +30%, -0% ~ DC 5000V +20%, -0%
Insulation Resistance Testing Range	0.0MΩ~1000GΩ
Short Circuit Current	1.3 mA Approx
Insulation Resistance Accuracy	0~99.9GΩ : ±5% rdg ±3% rdg above 100GΩ : ±20%
Voltage Testing Range	DC : ±30 ~ ±600V ; AC : 30 ~ 600V (50/60Hz)
Voltage Resolution	1V
Accuracy	±2%rdg ±3rdg
Sampling Rate	0.5 ~ 10 times / sec
Operation Condition	0°C ~ 40°C, ≤ 85% RH
Storage Condition	-20°C ~ 60°C, ≤90% RH
Over Load Protection	√
Auto Discharge	√
Battery Indication	√
Polar index measurement	√
Alarm	High Voltage Warning Symbol & Buzzer Alarm
External power supply	DC adapter 12V / 1A





ZOTEK Hot sale multimeter ZT-X Multifunction Push button auto range digital multimeter



Product Features:

- 1.Auto Ranging and Manual ranging
- 2.True rms measureme
- 3.Quick and easy,One-handed operation
- 4.Intelligent operating AC DC frequency position
- 5.LCD display
- 6.Core display screen,Secondary display screen,Analog bar display
- 7.550V high voltage protection
- 8.Relative numerical Detection
- 9.9999 HD Count display
- 10.5 minutes without use, automatic shutdown
- 11.NCV induced voltage detection
- 12.Frequency detection,temperature check



General Specifications	
Display(LCD)	9999 Counts
Ranging	Auto/Manual
Material	ABS+TPE
Update Rate	3 Times/Second
Ture RMS	√
Data Hold	√
Backlight	√
Low Battery Indication	√
Auto Power Off	√

Mechanical Specifications	
Dimension	146*74*34mm
Weight	125g
Battery Type	1.5V AA Battery * 2
Warranty	One year

Environmental Specifications		
Operating	Temperature	0~40°C
	Humidity	<75%
Storage	Temperature	-20~60°C
	Humidity	<80%



TOPDON BT500P Car Battery Tester with Printer 12V 24V Load Tester

Car Battery Tester with Printer 12V 24V Load Tester, TOPDON BT500P Automotive Alternator Tester Auto Digital Analyzer Tool Charging



CAR BATTERY TESTER with BUILT-IN PRINTER -- TOPDON BT500P is an advanced tool for both professionals and DIYers. This automotive battery tester can check the overall health of your battery, gage the cranking capability, check its aging status, and run a complete system charging test. With built-in thermal printer, you can get a diagnostic receipt in seconds and share it with your customers.

- **12V & 24V BATTERY LOAD TESTER** -- Does it work on your car? TOPDON BT500P automotive battery tester works on 12 volt & 24 volt lead-acid batteries including regular flooded, AGM flat plate, AGM spiral, GEL and EFB batteries with the test range (100-1700 CCA). Compatible with cars, motorcycles, trucks, RVs, ATVs, SUVs, boats, yachts, mowers and even golf carts.

- **QUICK TEST MODE** -- Unsure of battery type and CCA value? We've figure it out beforehand. With quick test mode, battery testing becomes simple. Just input AH value and you get the results in seconds. Suitable for AH marked and CCA unmarked.

- **FAST AND ACCURATE** -- Want to buy a used car but worry about a damaged battery? TOPDON BT500P can test. It gives you, just in seconds, accurate results to avoid a lemon.





Portable water turbine valve

FLOWMETER

High quality, because focus, so professional

- Stainless steel material
- Intelligent meter
- Integrated impeller
- Specialty selection



Types of flow sensor



caliber (mm)	Normal flow range (m3/h)	Extended flow range (m3/h)	Routine stress tolerance (Mpa)
DN4	0.04-0.25	0.04-0.4	6.3
DN6	0.1-0.6	0.06-0.6	6.3
DN10	0.2-1.2	0.15-1.5	6.3 - 1.6 (Hygienic)
DN15	0.6-6	0.4-8	6.3 - 2.5 (Flange) 1.6 (Hygienic)
DN20	0.8-8	0.45-9	6.3 - 2.5 (Flange) 1.6 (Hygienic)
DN25	1-10	0.5-10	6.3 - 2.5 (Flange) 1.6 (Hygienic)
DN32	1.5-15	0.8-15	6.3 - 2.5 (Flange) 1.6 (Hygienic)
DN40	2-20	1-20	6.3 - 2.5 (Flange) 1.6 (Hygienic)
DN50	4-40	2-40	2.5 (Flange) - 1.6 (Hygienic)
DN65	7-70	4-70	2.5 (Flange) - 1.6 (Hygienic)
DN80	10-100	5-100	2.5 (Flange) - 1.6 (Hygienic)
DN100	20-200	10-200	1.6 (Flange) - 1.6 (Hygienic)
DN125	25-250	13-250	1.6 (Flange)
DN150	30-300	15-300	1.6 (Flange)
DN200	80-800	40-800	1.6 (Flange)

RS485 digital flow meters output

Material	Stainless steel	
Display	LCD display for total flow and instaneous flow	
Application	No impurities, no strong corrosive liquids, such as water, diesel,oil,alcohol,etc	
Diameter	DN4-DN200 mm	
Flow range	0.04-800 m3/h	
Accuracy	1.0%	
Connection	Flange	
Material	Meter body	stainless steel
	Flange	stainless steel
Power	24VDC	
Output	4-20 mA / pulse	
Medium temp.	-20-+120 °C	
Enclosure	IP65	



Gas flowmeter rotameter

KHL-08A60M-V(60~480SCFH/24~240LPM) Panel air flow meter can be used with an ozone generator to regulate the flow of air input, with adjustable valve, simple, compact and portable, unbreakable and long life span. Besides, 316L stainless steel regulating valve and copper fastening screw make it durable.



0.5—5LPM

Multiplicity:

±0.25%FS

Maximum pressure:

1MPa/150psi

Maximum temperature:

80℃/176°F

Basal body:

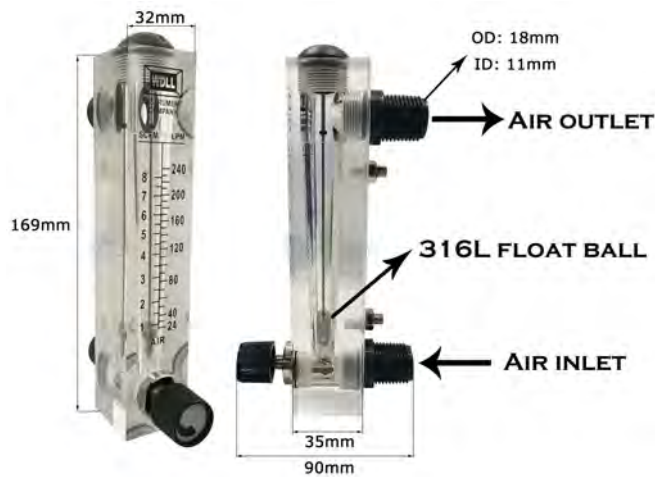
Acrylic

Fastening Screw:

Copper

O-ring:

Silicon rubber



Medidor de agua Ultrasonico



Index	Water meter parameters				
Nominal diameter DN (mm)	15	20	25	32	40
level of accuracy	level 2 (CJ128 - 2007)				
Common flow Q3 (m3/h)	2.5	4	6.3	10	16
Boundary flow Q2p (m3/h)	0.02	0.032	0.0504	0.08	0.128
Minimum flow Q1 (m3/h)	0.125	0.02	0.0315	0.05	0.08
Measured medium water	uniform liquid and fill the pipe under test				
Turndown ratio	R200				
Maximum allowable working pressure	1.6MPa				
Working environment	-25°C~55°C, ≤100%RH				
Temperature class	T30				
Climatic and mechanical environment	C				
Electromagnetic compatibility level	E1				
LCD liquid crystal display	[8 digits, decimal] + special symbols				
Data communication interface	M-Bus, infrared				
Built-in battery working life	3.6V high-energy lithium battery				

Quality Choice

01

LCD liquid crystal display

High-definition LCD backlight display, showing instantaneous flow, accumulated flow value, etc.


02

Through integrated structure

The pipe section is not easy to be clogged, and it is manufactured by forging process, and the material is forged brass, which ensures the smooth circulation and heating efficiency of the heating pipeline.


03

IP68 protective shell

The shell adopts IP65 protective shell, which is anticorrosive, dustproof and moistureproof. Outdoor installation, long-term stability.



Technical parameters

Nominal diameter	Overload traffic	Commonly traffic	Minimum traffic
15	3m³/h	1.5m³/h	0.03m³/h
20	5m³/h	2.5m³/h	0.05m³/h
25	7m³/h	3.5m³/h	0.07m³/h
32	12m³/h	6m³/h	0.12m³/h
40	20m³/h	10m³/h	0.2m³/h
50	30m³/h	15m³/h	0.6m³/h

Overall dimensions

Nominal diameter	Length(mm)	Width(mm)	Weight(kg)
15	130	50	0.7
20	130	90	0.7
25	160	110	1.5
32	180	130	1.8
40	200	140	2.5
50	200	205	6



Multi Circuitos Energy Meter



Product module description



- Main module**
- * 3 phase 3 * 220 / 380V power supply, providing power for later measurement module ;
 - * HMI ; LCD and button
 - * Infrared ;
 - * RF (IC card) ;
 - * 2 channel RS485 modbus-rtu (*C function) ;
 - * 3 rd wireless module RS485communication (RJ45 connection) ;
 - * Max 2DI/2DO (*K function) ;
 - * Max 1circuits ethernet (CE function) ;

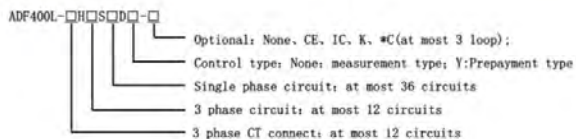
Specification

Product Description

Characteristic

Model	ADF400L-2S	ADF400L-3H	ADF400L-4H	ADF400L-6D
Channel	2 channel 3 phase	3 channel 3 phase	4 channel 3 phase	3 circuits single-phase
Current input	3*10(80)A	3*1(6)A	3*1(6)A	10(80)A
Voltage input	3*220/380V	3*220/380V	3*220/380V	220V
Price (FOB Shanghai)	\$155	\$155	\$155	\$155

Product description

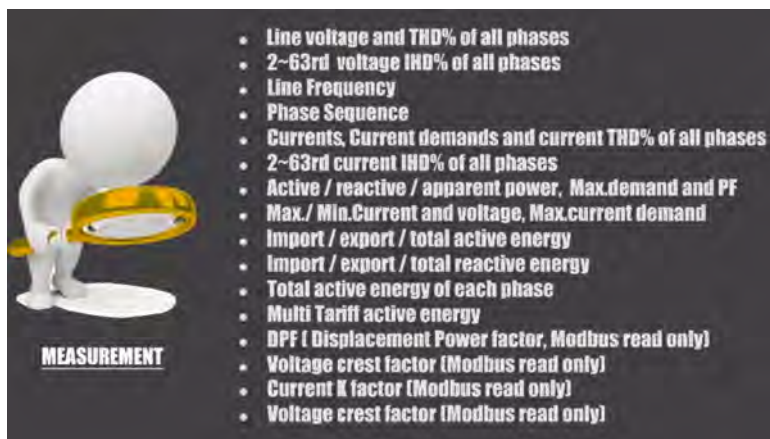


- CT connect**
- * 2 channel 3 phase 3*1 (6) A ;
 - * 2 channel pulse output ;
 - * 2 channel working condition · pulse and communication LED ;
 - * Max 4DI/4DO (*K function) ;

Function	ADF400L
Display	LCD
Energy monitoring	Active energy (positive、negative) , Reactive energy (positive、negative) ,
Power measurement	Voltage、current、power factor、frequency、active power、reactive power、apparent power
Harmonic function	Total harmonic、sub harmonic (2~31)
3 phase unbalance	Voltage , current unbalance
DI/DO	Main module 2DI2DO
	CT connect 2DI4DO (direct connect)
Communication	infrared
	RS485 MODBUS-RTU and DL/T645
History energy	12 month energy record



Medidor de energía—Analizador EATRON X-96



Electrical characteristics		
Type of measurement		RMS including harmonics on three phase AC system (3P, 3P+N)
Measurement accuracy	Active power	1.0% of range maximum
	Reactive power	1.0% of range maximum
	Apparent power	1.0% of range maximum
	Active Energy	IEC 62053-22 Class 0.5S, IEC 62053-21 Class 1.0
	Reactive Energy	1.0% of range maximum to IEC 62053-24
	Frequency	0.2% of mid-frequency
	Current	0.5% of range maximum
	Voltage	0.5% of range maximum
	Power Factor	1% of unity (0.01)
THD	2% to 63rd harmonic	

Input & Output		
Input-Current	Rated Current	5A
	Max Current	9999A
	Min Current	0.25A
	Starting Current	20mA
Output	Contact Rating current	2-27mA at 27V DC
	Contact Rating voltage	5-27V DC
	Pulse Width	60 / 100 / 200 ms
	Pulse rate of S0 1	0.01 / 0.1 / 1 / 10 / 100 kWh/kVArh
	Pulsed output of S0 2 (non-configurable)	3200IMP/kWh
	Communications	Modbus RTU (RS485)
Type	2-wire half duplex	
Baud rate	2400,4800, 9600, 19200, 38400	
Address	1 to 247	

TCS—1000 Ampers



The multifunction energy analyzer SMART X96 series is a top new-generation intelligent panel meter, used not only in the electricity transmission and power distribution system, but also in the power consumption measurement and analysis in high voltage intelligent power grid.

This document provides operating, maintenance and installation instructions for the Eastron SMART X96 series. The unit measures and displays the characteristics of 1p2w, 3p4w and 3p3w supplies, including voltage, frequency, current, power and active and reactive energy, imported or exported, Harmonic, Power factor, Max. Demand etc. Energy is measured in terms of kWh, kVArh and kVAh. Maximum demand current can be measured over preset periods of up to 60minutes.

In order to measure energy, the unit requires voltage and current inputs in addition to the supply required to power the product. The requisite current input(s) are obtained via current transformers. The SMART X96 can be configured to work with a wide range of CTs, giving the unit a wide range of operation. Built-in interfaces provides RS485 Modbus RTU and Ethernet TCP/IP communication. Digital input and outputs are provided for external signal counting and external device control. 30 types parameters can be set for alarm.

The unit uses plug-in terminals for easy wiring and push-in mechanism for quick installation.



Mini Infrared Thermometer type K Extech IR267



Especificaciones técnicas

Fabricante	Extech
Número de parte	IR267
Cantidad de paquetes de artículos	1
Número de piezas	1
Sistema de medición	Metric
Componentes incluidos	Complete with 9V battery, and general purpose Type K bead wire temperature probe
Incluye baterías	Sí
¿Se necesitan baterías?	Sí
Tipo de celda de batería	Alcalina
Peso	0.2 Kilogramos
Longitud	4.7 inches
Ancho	1.7 inches
Altura	6 inches

Dimensiones del producto	11.94 x 4.32 x 15.24 cm; 200 g
Pilas	1 Especifico del producto necesaria(s), incluida(s)
Número de modelo del producto	IR267
ASIN	B011B4N77E
Producto en Amazon.com.mx desde	13 julio 2016



Extech IR267 Mini Infrared Thermometer with Type K

The compact IR267 non-contact Infrared (IR) thermometer measures temperatures up to 1112°F (600°C) using a built-in laser pointer to help identify target area and improve aim. This mini digital IR thermometer also features an easy to read backlit LCD screen and handy-push-buttons for convenient, ergonomically friendly operation.

The IR267's Type K thermocouple also provides contact temperature measurements up to 1832°F (1000°C) and its built-in temperature sensor accurately measures ambient air temperatures up to 158°F (70°C). The Extech mini IR thermometer's additional features include Automatic Data Hold and a programmable high/low alarm that alerts the user both visually and audibly when temperature limit exceeded.



Substation transformer winding turn ratio vector group test set TTR meter

Automatic 3-phase Transformer Turns Ratio Test kit /TTR Tester

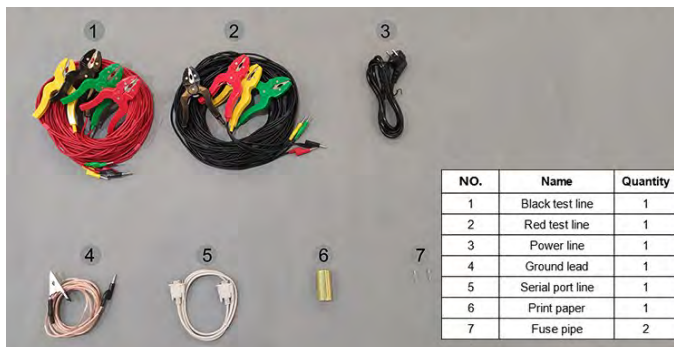


Introduction:

In power transformer in the production of semifinished products and finished products, before the new installation of the transformer in operation and according to the national ministry of preventive test procedures, require the operation of transformer turn ratio or voltage ratio test, you can check the correctness of the transformer turn ratio, tap-changer condition, whether turn-to-turn short circuit, transformer whether can run parallel. Traditional variable ratio tester overcomes the drawback of traditional variable ratio bridge test, the operation simple and intuitive, a three phase transformation ratio or turn ratio test, the test is fast, high accuracy.



- ◆ It has high and low voltage reverse connection protection, transformer turn short circuit protection, tap switch failure protection, output full short circuit protection, and increased instrument stability.
- ◆ After inputting the rated parameter, it can automatically measure the transformer ratio value, error value and on-load tap-changer position.
- ◆ Adopt 7-inch high-definition color touch-screen LCD, modular display, clear display even under strong light.
- ◆ The device can be equipped with both print output, USB port and RS232 port, which is convenient for paperless office.
- ◆ The use of cold and heat resistant, sealed, waterproof, anti shock and multi-function engineering plastic box, easy field test.





Substation transformer winding turn ratio vector group test set TTR meter

Automatic 3-phase Transformer Turns Ratio Test kit /TTR Tester features:

- **test range wide, 0.9-10000.**
- fast test speed, 10 seconds to complete three phase test.
- wide suitable types of transformer, with Z shape coupling transformer test.
- automatically group testing functions.
- perfect protection function, reverse connect protection function, high and low voltage transformer interturn short circuit protection function.
- After the rated input parameters, it can automatic measuring transformer and error change ratio value and tapping.
- printer output measurements, English menu display, color LCD.
- the highest can be measured with 99 points after a transformer.

Automatic 3-phase Transformer Turns Ratio Test kit /TTR Tester technical Parameters:

- Measuring Range: 0.9 ~ 10000
- Accuracy: $\pm 0.1\% + 2$ words (0.9 ~ 500),
 $\pm 0.2\% + 2$ words (501 ~ 2000)
 $\pm 0.5\% + 2$ word (2001 ~ 10000)
- Resolution: the minimum 0.0001
- Working Power Supply: AC220V $\pm 10\%$ 50 Hz ± 1
- Working Temperature: -10 $^{\circ}$ C~40 $^{\circ}$ C
- Relative Humidity: $\leq 85\%$, no condensation
- Size; 400 mmx320mmx150mm

Automatic 3-phase Transformer Turns Ratio Test kit /TTR Tester structure:

- display screen: 240 * 128 dot matrix LCD, with LED backlight, display the operation menu and the test results.
- high voltage terminal: after the test line is yellow, green, red, black four-color terminal, can be test the transformer high voltage side of the three phase of A, B, C, O.
- low voltage terminal: Yellow, green, red, black corresponding connection tested transformer low voltage side of the three phase of a, b, c, O
- AC220V: the machine power supply input port, connect AC220V power frequency power supply.
- printer: After completion of measurement, print the test results.
- luminance adjustment: potentiometer adjusts the contrast of the display character.
- tester reset: click this button instrument reset to initial state.
- direction key: up, down, left and right four direction keys, used to select and modify the options menu.
- enter button: start the measurement, print the test results, the shortcut key.
- Protective grounding column.



Universal Model Solenoid Valve For Refrigeration System

Universal Model Solenoid Valve For Refrigeration System

This Solenoid Valve is an automatic control parts used in liquid line, suction line and steam line of refrigeration system to control the refrigerant to pass or not pass, the valve is widely used in refrigeration compressor group, central air-conditioning, coldstorage equipment and bus air-conditioning system.



■ 技术参数 Technical Parameters

制冷剂 /Refrigerant	R12,R22;R134a,R404,R407C,R410,R502
介质温度 /Media Temperature	-30°C - +105°C
使用寿命 /Service	100000 次 (100,000 cycles)
工作压力 /Working Pressure	3.0 MPa

型号 Model	动作方式 Operating Principles	口径 Port Size (mm)	连接尺寸 / Connection Size			开阀压差 /Opening Pressure Differential(bar)		KV 值 /KV factor (m ³ /h)
			外螺纹 SAE(in)	焊接 /ODF in.	mm	最小 /Min	最大 /MOPD	
SH-1020/2	直动式 Direct Acting	2.5	1/4"			0		0.175
SH-1020/3			3/8"					0.23
SH-1028/2			-	1/4"				0.15
SH-1028/3			-	3/8"				0.23
SH-1064/3	膜片式 Diaphragm Pilot Operated	7.0	3/8"	-		0.05	21	0.80
SH-1064/4			1/2"	-				
SH-1068/3			-	3/8"				
SH-1068/4			-	1/2"				
SH-1070/4		1/2"	-		2.20			
SH-1070/5		5/8"			2.61			
SH-1078/4			1/2"		2.20			
SH-1078/5			5/8"	16				
SH-1078/6			3/4"		2.61			
SH-1079/7			7/8"	22				
SH-1098/6	16.5		3/4"		4.80			
SH-1098/7			7/8"	22				
SH-1099/9			1-1/8"		5.70			
SH-1078/9	25.5		1-1/8"					
SH-1079/11			1-3/8"	35	10			



Universal Model Solenoid Valve For Refrigeration System



FDF2AK series solenoid valves are normally open type, which are mainly used in refrigeration systems such as air conditioners and freezing and deep-freezing systems for automatically controlling the stop-and-go of refrigerant.

Characteristic

- Compact design, low power consumption.
- Excellent operation performance, stable and reliable.

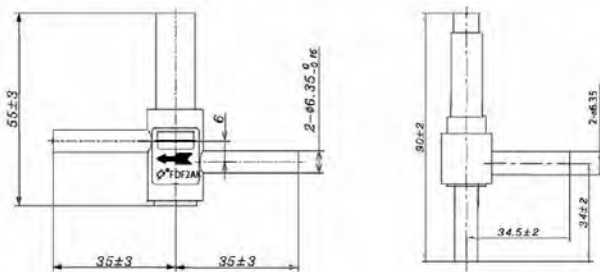
General specification

- Applicable refrigerant: R22, R407C, R410A etc.
- Applicable medium temperature: -30°C ~ +120°C.
- Applicable ambient temperature: -30°C ~ +50°C.
- Relative humidity: below 95%.
- Maximum work pressure: 4.2MPa.

Technical parameters of valve body

产品型号 Product Model	操作类型 Operation type	口径 Port1	Cv	内泄漏量 Internal leakage	最大工作压差 Max.OPD	最小工作压差 Min.OPD
		[mm]	[m ³ /h]	[ml/min]	[MPa]	[MPa]
FDF2AK01	常开式	1.8	0.06	<300	2.1	0
FDF2AK02	Normally open	1.9	0.09	<300	1.5	0

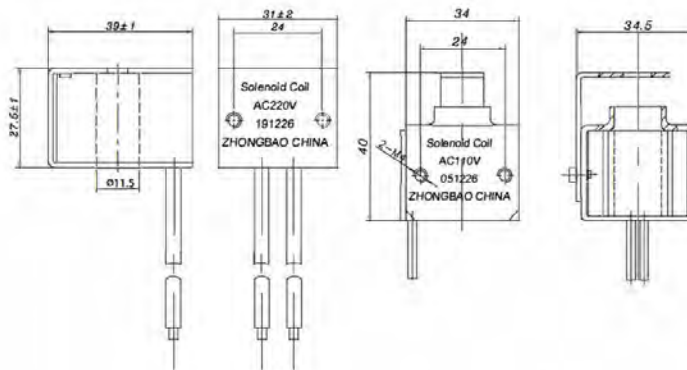
Size of valve body



Technical parameter of coil

Rated voltage [V]	Voltage Tolerance	Frequenc [Hz]	Wiring type
AC220 AC220-240 AC110 DC24	-15%~+10%	50/60	Lead wires type

Size of Coil





1/4 copper access valve Charging valve , for refrigeration and air conditioning



High quality access valve , can OEM , the thickness can make 0.35MM , 0.4MM , 0.5MM , 0.6MM , 0.7MM



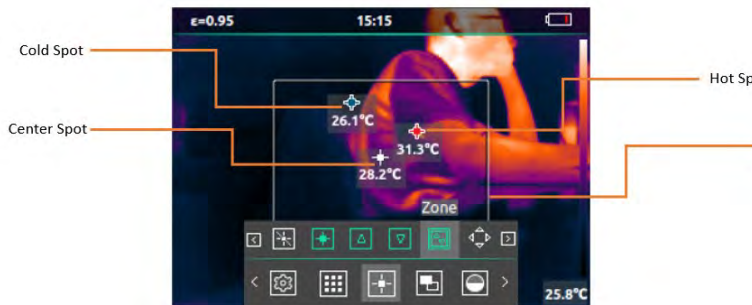
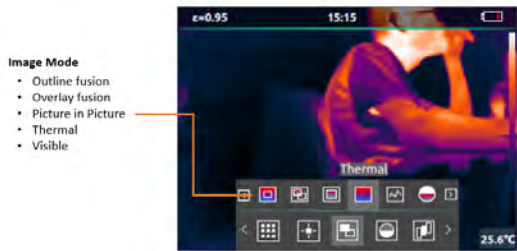
Model	SPEC
SCLFD-3/16X	3/16"
SCLFD-1/4X	1/4"
SCLFD-5/16X	5/16"
SCLFD-3/8X	3/8"
SCLFD-1/8X	1/8"

Thermographic camera DP22



Features

- Infrared thermal imaging resolution is 320x240
- Temperature range supports -10°C~+330°C (can be customized)
- Supports the hottest, coldest, central point temperature measurement and zone area temperature measurement of the whole imaging. The temperature measurement accuracy can reach $\pm 2^{\circ}\text{C}$ or $\pm 2\%$.
- The following imaging modes are supported:
 Infrared thermal imaging mode
 Visible light mode
 Picture in Picture mode
 Outline fusion mode
 Overlay fusion mode
- All pixels temperature can be analyzed through Dianyang App or PC client.

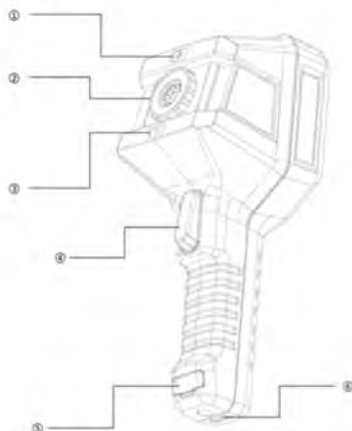


Thermographic camera DP22

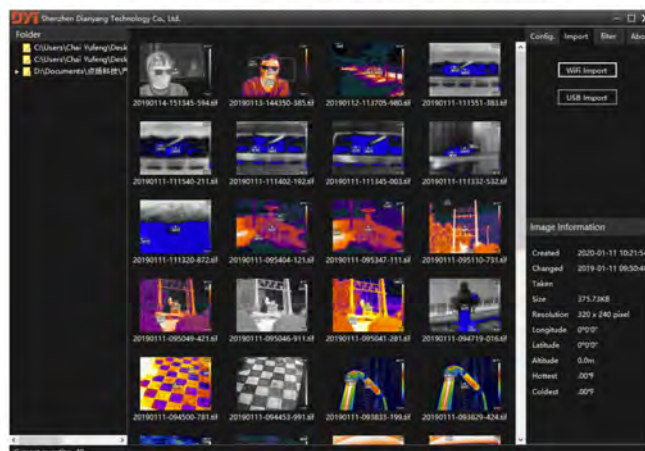


	Parameter	Specification
Infrared Thermal Imaging	Resolution	320x240
	Frequency band	8~14um
	Frame rate	9Hz
	NETD	70mK@25°C
	Field of view	Horizontal 34.4°, vertical 25.8
	Lens	6.5mm
	Temperature range	-10~330°C
	Temperature measurement accuracy	±2°C or ±2%
	Temperature measurement	Hottest, coldest, central point, zone area temperature measurement
	Color palette	Tyrian, white hot, black hot, iron, rainbow, glory, Hottest, coldest.
Visible	Resolution	640x480
	Frame rate	25Hz
	LED light	Support
Display	Display Resolution	320x240
	Display Size	3.5 inch
	Image mode	Edge fusion, overlay fusion, picture-in-picture, infrared thermal imaging, visible light
General	Working time	>4 hours in 25°C
	Battery Charge	Built-in battery, it is recommended to use +5V & ≥2A universal USB charger.
	WiFi	Support App and PC software data transmission
	Operating temperature	-20°C~+60°C
	Storage temperature	-40°C~+85°C
	Waterproof and dustproof	IP54
	Dimension	230mm x 100mm x 90mm
	Net Weight	420g
	Package dimension	270mm x 150mm x 120mm
Gross weight	970g	
Storage	Capacity	Built-in memory, about 6.6G available, can store more than 20,000 pictures
	Picture storage mode	Simultaneous storage of infrared thermal imaging, visible light and fusion images
	File format	TIFF format, support full frame pictures temperature analysis
Interface	Data and charging interface	USB Type-C(Support charging and data transmission)

- Visible camera lens
- Infrared thermal lens
- LED
- Photo trigger
- USB charging and data transmission port
- Lanyard port



The Analysis software can import and analyze the pictures took by the DP-22 thermal camera, the interface is below.



All the pictures will be saved as 3 frames in one picture file.

- What you see is what you get
- Visible image raw data
- Thermal image raw data

Thermographic camera



Model	IT21
Infrared spectral band	8 μ m to 14 μ m
Image frame rate	9Hz
Housing protection class	IP54
Temperature measurement range	-20 \square - 330 \square
Infrared resolution	210*160
Screen resolution	3.5 inches, 640 * 480TFT
Spatial resolution	1.7mrad
Menu interface	Humanized operation interface, easy to operate
Temperature measurement alarm function	High temperature alarm can be set
Color mode	Spectra / whitehot / blackhot / Iron, professional algorithm makes images bright
Drop	Withstands a drop of 2 meters (6.5 feet)
Focusing method	Fixed focal length / minimum focal length is 0.5m
Image fusion model	Fusion (0%, 25%, 50%, 75%, 100%)
Field of view	27°* 35°
Thermal sensitivity	0.07°
Visible pixels	300 thousands pixels
Image format	Photo JPG
Storage medium	Built-in 4G / 8G
Charging method	Charger
Power supply type	Lithium battery (replaceable)
Battery life	4-6 hours
Vibration and shock	2G, IEC 68-2-6

Functions and Features





1. Thermal camera can measure the temperature of moving objects;
2. Temperature can be measured with a microscope head for targets with a diameter of a few microns or less;
3. Rapid thermal diagnosis for equipments;
4. High sensitivity, $\pm 2\%$ or $\pm 2\%$ accuracy (take the maximum);
5. 33600 pixel HD display, long distance measurement ;
6. Automatically track cold and hot spots, and instantly identify the coldest and hottest points in the measurement range;
7. Can measure up to 5 microns;
8. It is widely used in medical, fire protection, archeology, transportation, agriculture, geology, energy, electronics manufacturing and other fields. It is ideal for electricians and maintenance technicians, and can be used to quickly find problem areas.

Thermographic camera

Product Description



Infrared thermal imager is a device that uses infrared thermal imaging technology to detect the target object's infrared radiation and apply signal processing, photoelectric conversion and other means to convert the temperature distribution image of the target object into a visible image. The infrared thermal imager accurately quantifies the heat actually detected and images the entire target object in real time in the form of a surface, so it can accurately identify a suspected faulty area that is heating.

-  Quick temperature capture
-  Automatic hot and cold tracking
-  33600 HD pixels
-  Lithium battery charging

- 
- 
- 
- 

Quick export of images by USB

Saved images can be exported by connecting to a computer via a USB cable Built-in rechargeable lithium battery that can be charged via USB.

- Emissivity
- Power display
- Lowest temperature point
- Filming time
- Central temperature point
- Central temperature
- Highest temperature point
- Highest temperature
- Lowest temperature
- Min:15.7°C Cen:20.2°C Max:25.8°C
- UP
- OK
- On/Off button
- Return
- Left
- Right
-
- Down

Thermographic camera DP22-10



SPECIFICATION		
Infrared Thermal Imaging	Resolution	320x240
	Frequency Band	8-14um
	Frame Rate	9Hz
	NETD	70mK@25°C
	Angle of View	Horizontal: 34.4° & vertical: 25.8°
	Lens Diameter	0.26" or 6.5mm
	Temperature Range	14°F to 662°F(-10 to +330°C)
	Temperature Measurement Accuracy	±2°C or ±2%
	Temperature Measurement	Hottest, Coldest, Central Point & Zone Area Temperature
	Color Palette	7 Modes (Tyrian, White Hot, Black Hot, Iron, Rainbow, Glory, Hottest & Coldest)
Temperature Alarms	Support, show the alarms of above or below the threshold.	
Visual Parameters	Resolution	640x480
	Frame Rate	25Hz
	LED Flashlight	✓
Display	Display Resolution	320x240
	Display Size	3.5 inches
	Image Mode	5 Modes (Outline Fusion, Overlay Fusion, Picture-in-Picture, Infrared Thermal Imaging & Visible Light)
General	WiFi Connection	Support App and PC software data transmission
	Working Time	>4 hours in 77°F
	Battery Charge	Built-in battery (+5V & ≥2A universal USB charger)
	Operating & Storage Temperature	-40 to +85°C(-40 to +185°F) & -20 to +60°C(-4 to +140°F)
	Waterproof and Dustproof	IP54
	Shipping Weight	2lb or 970g
Storage	Capacity	6.6G Memory Card, >30,000 pictures storage
	Pictures Storage	Simultaneous Storage of Infrared Thermal Imaging, Visible Light & Fusion Images
	File Format	TIFF Format, support full frame pictures
Interface	Data and Charging Interface	USB Type-C(Support charging and data transmission)



Thermographic camera



SPECIFICATION		
Infrared Thermal Imaging	Resolution	320x240
	Frequency Band	8-14um
	Frame Rate	9Hz
	NETD	70mK@25°C
	Angle of View	Horizontal: 34.4° & vertical: 25.8°
	Lens Diameter	0.26" or 6.5mm
	Temperature Range	14°F to 662°F(-10 to +330°C)
	Temperature Measurement Accuracy	±2°C or ±2%
	Temperature Measurement	Hottest, Coldest, Central Point & Zone Area Temperature
	Color Palette	7 Modes (Tyrian, White Hot, Black Hot, Iron, Rainbow, Glory, Hottest & Coldest)
Visual Parameters	Temperature Alarms	Support, show the alarms of above or below the threshold.
	Resolution	640x480
	Frame Rate	25Hz
Display	LED Flashlight	✓
	Display Resolution	320x240
	Display Size	3.5 inches
General	Image Mode	5 Modes (Outline Fusion, Overlay Fusion, Picture-in-Picture, Infrared Thermal Imaging & Visible Light)
	WiFi Connection	Support App and PC software data transmission
	Working Time	>4 hours in 77°F
	Battery Charge	Built-in battery (+5V & ≥2A universal USB charger)
	Operating & Storage Temperature	-40 to +85°C(-40 to +185°F) & -20 to +60°C(-4 to +140°F)
	Waterproof and Dustproof	IP54
Storage	Shipping Weight	2lb or 970g
	Capacity	6.6G Memory Card, >30,000 pictures storage
	Pictures Storage	Simultaneous Storage of Infrared Thermal Imaging, Visible Light & Fusion Images
Interface	File Format	TIFF Format, support full frame pictures
	Data and Charging Interface	USB Type-C(Support charging and data transmission)